

Châtenois / Turckheim

EuroVelo 5 - Moselle / Alsace



Départ
Châtenois

Arrivée
Turckheim

Durée
1 h 56 min

Distance
29,10 Km

Niveau
I begin / Family

Thématique
In the vineyards

After Châtenois, the Véloroute du Vignoble d'Alsace follows the historic Roman way that ran along the bottom of the Vosges's foothills, providing panoramic views over the sea of vines beyond. Typical wine-producing villages follow in quick succession, a short spin on your bike allowing you to reach prestigious viticultural stops such as Ribeauvillé, Riquewihr or Kaysersberg, while the great town of Colmar, with its utterly picturesque Petite Venise Quarter, lies not far off.

The route

On this stage, the Véloroute du Vignoble d'Alsace mainly follows the trace of an historic Roman road, transformed here into tarmacked vineyard tracks. It is signposted with its own logo, in the shape of a bunch of grapes, so you can follow the signage both for the Véloroute du Vignoble d'Alsace and EuroVelo 5 in these parts.

SNCF train stations

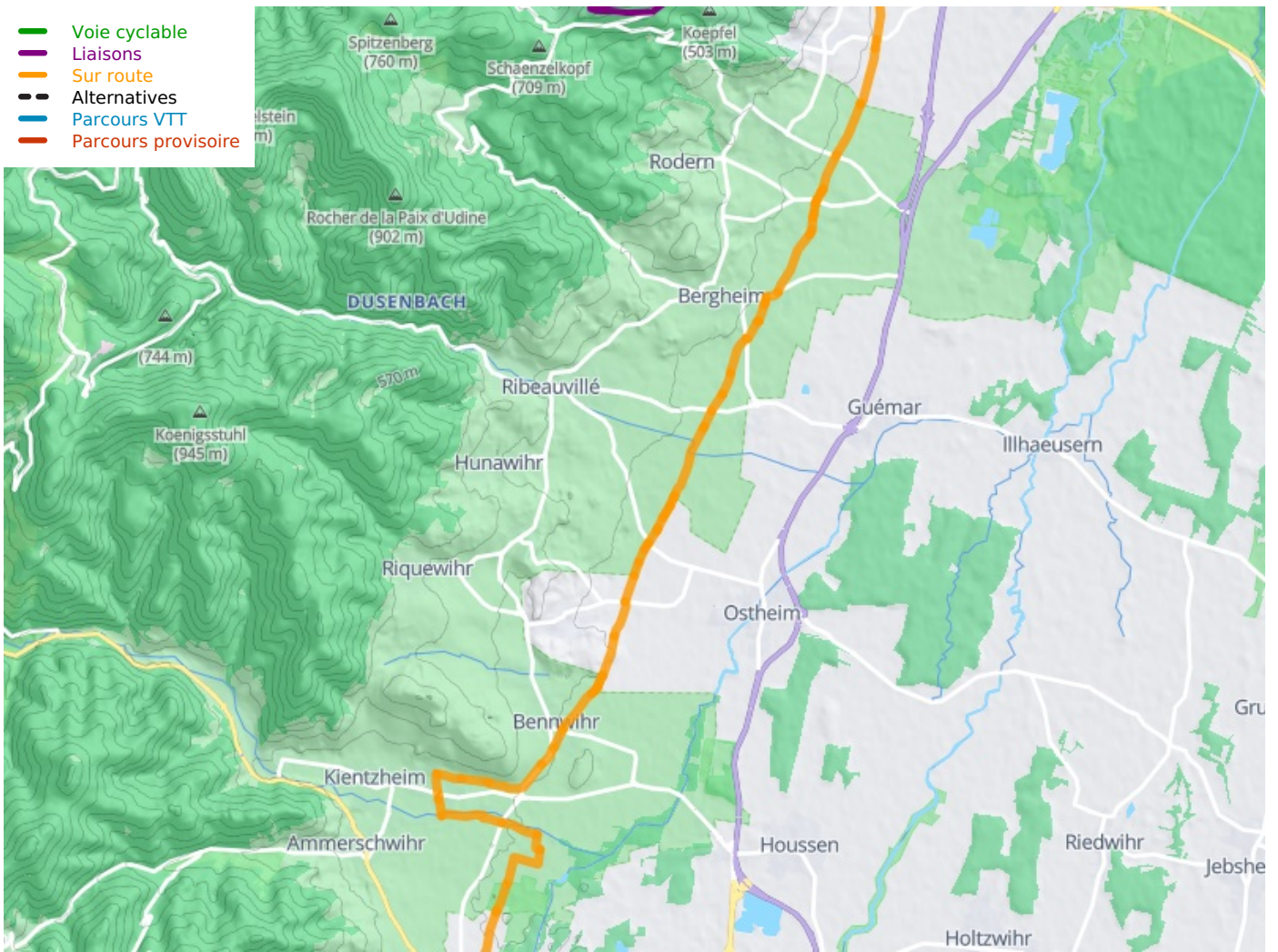
Train stations at Sélestat and Colmar

- Regional TER line serving Strasbourg - Sélestat - Colmar - Mulhouse - Saint-Louis (Basel)

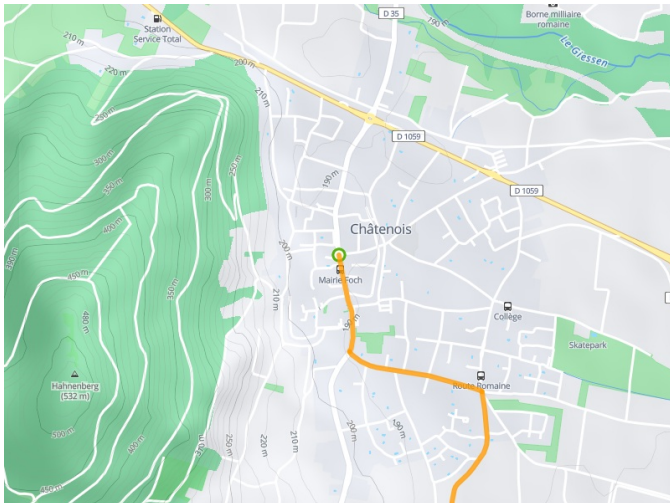
Don't miss

- **Châtenois:** Quartier des Remparts.
- **Orschwiller:** Château du Haut-Koenigsbourg.
- **Ribeauvillé:** the village awarded 4 flowers for its floral displays; châteaux of Saint-Ulrich and Ribeaupierre.
- **Hunawihr:** a member of the association Les Plus Beaux Village de France, with fortified church.
- **Kintzheim:** Volerie des Aigles (with displays of birds of prey) and the Montagne des Singes (a monkey sanctuary).
- **Bennwihr:** Parc de Schoppenwihr (botanical gardens).

- Voie cyclable
- Liaisons
- Sur route
- - - Alternatives
- Parcours VTT
- Parcours provisoire



Départ
Châtenois



Arrivée
Turckheim

