

## Bâle / Huningue / Kembs

### EuroVelo 6 - Cycle Route of the rivers



**Départ**  
Basel

**Arrivée**  
Kembs

**Durée**  
55 min

**Distance**  
13,99 Km

**Niveau**  
I begin / Family

**Thématique**  
French rivers

Basel, on the Swiss border with France and Germany, is the great gateway to this EuroVelo 6 stage. Known as the town of 40 museums, it has much to entice visitors. Follow the Rhine to enter Germany briefly and cross the iconic Trois Pays (Three Countries) footbridge. Entering France, the Huningue Canal leads to Kembs via Alsace's 'Little Camargue' marshes. This stage is very easy.

#### Route

In front of Basel train station, look for the link signposted '6'. Head to the Rhine and the historic Mittlere Rheinbrücke bridge, then follow the signposted right-bank trail to the German frontier to cross the Trois Pays footbridge. On the French side, follow signs taking you to the Huningue Canal and on to Kembs.

#### Train station - SNCF

##### Basel station

Many international routes.

TER (local services) Mulhouse to Bâle every 30 min with bike space trajet en 30'.

#### Don't Miss

La Suisse à Vélo [for cycling across Switzerland](#)

**Basel:** the very lively Rhine quays (with café terraces, plus watersports); the historic centre, Marktplatz (the old market square) and the cathedral; numerous museums

**Huningue:** the historic port; the watersports leisure park; the superb footbridge (for cyclists as well as pedestrians)

**Kembs:** the attractive little town, plus its port; the impressive hydroelectric plant; the lock designed by the great 20th-century architect Le Corbusier  
Along the cycle route: several well-laid-out stopping places and observatories.

#### Markets

**Basel :** every day except Sunday

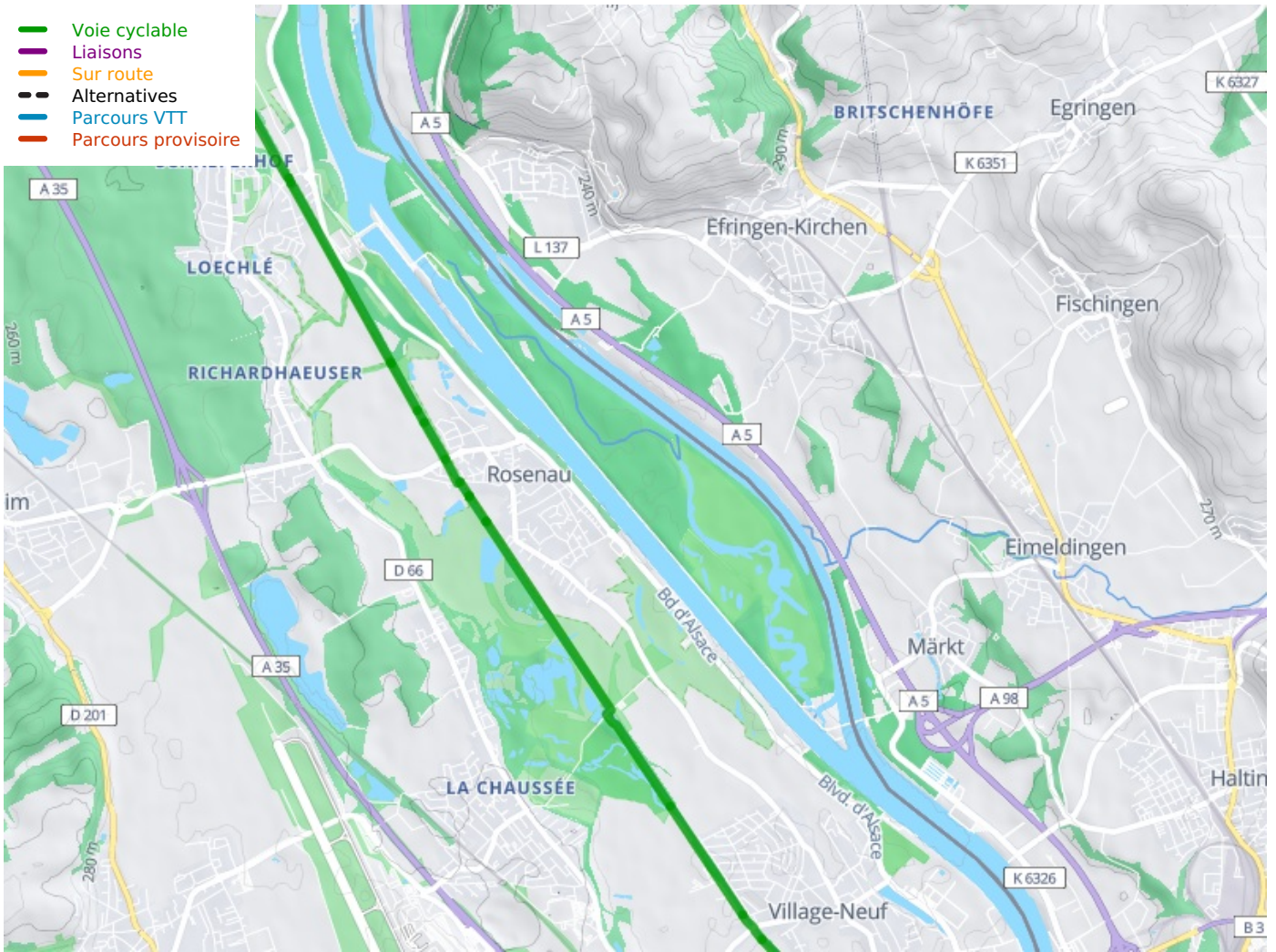
**St Louis :** Saturday morning

#### TOURIST INFORMATION CENTRE

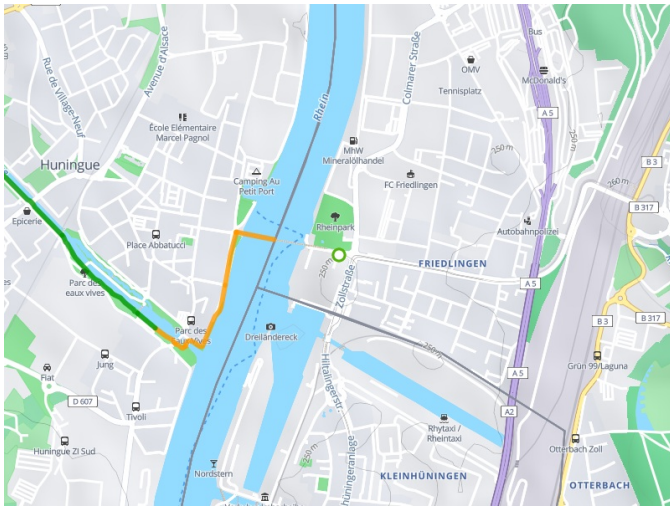
**Basel :** +41 (0)61 268 68 68

**St-Louis-Huningue :** +33 (0)3 89 70 04 49

- Voie cyclable
- Liaisons
- Sur route
- - - Alternatives
- Parcours VTT
- Parcours provisoire



**Départ  
Basel**



**Arrivée  
Kembs**

