

# L'Isle-sur-le-Doubs / Baume-les-Dames

## EuroVelo 6 - Cycle Route of the rivers



This is a splendid EuroVelo 6 stage in the Franche-Comté, the cycle path closely following the meanders in the Doubs River before a panoramic arrival at Baume-les-Dames. The valley is full of charm and enlivened by pleasure boats. It all makes for one of the most spectacular stretches of EuroVelo 6, but it is accessible to all.

### Route

Along a beautiful cycle path by the Doubs River, but with portions on roads, on leaving L'Isle-sur-le-Doubs and between Clerval and Roche-lès-Clerval (with a slope). A new footbridge crosses the Doubs at Baume-les-Dames.

### Train station - SnCF

L'Isle-sur-le-Doubs, Clerval and Baume-les-Dames stations  
TER (local services) Belfort > Montbéliard > Besançon  
(environ 15 trains / jour)

### Don't miss

**Clerval:** a pretty historic village; the Musée de la Mémoire et de la Paix, a war museum

**Roche-lès-Clerval:** an historic village perched above the Doubs

**Baume-les-Dames:** a lovely historic town with a remarkably rich heritage; also a river port offering cruises on the Doubs ; rock-climbing trail too.

### Markets

**Clerval :** Tuesday morning

**Baume-les-Dames :** 1st Thursday of the month

#### Départ

L'Isle-sur-le-Doubs

#### Arrivée

Baume-les-Dames

#### Durée

2 h 11 min

#### Distance

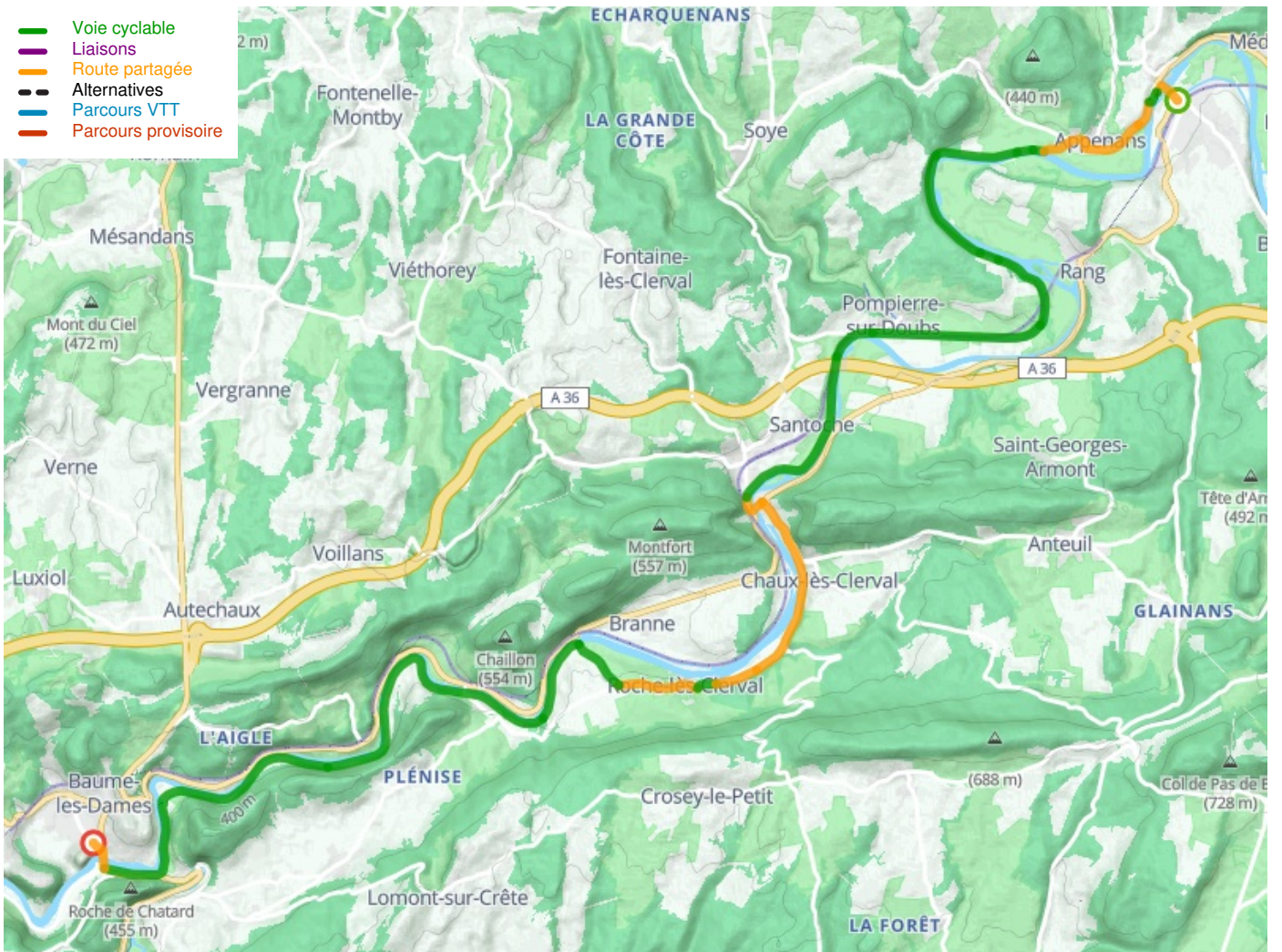
32,97 Km

#### Niveau

I cycle often

#### Thématique

Canals & intimate rivers



**Départ**  
L'Isle-sur-le-Doubs



**Arrivée**  
Baume-les-Dames

