

Vallon-Pont-d'Arc / Bourg-Saint-Andéol

Grande Traversée de l'Ardèche by mountain bike



Départ
Vallon-Pont-d'Arc

Arrivée
Bourg-Saint-Andéol

Durée
3 h 25 min

Distance
51,31 Km

Niveau
I cycle a lot

Thématique
In the vineyards, Nature & small heritage

Once past Salavas, enjoy unrivalled views over the Ardèche Valley on this final stage of the Grande Traversée de l'Ardèche VTT. Apart from the odd vine, the vast, wild limestone plateau here is only suitable for scrub. Its true riches lie hidden underground. Here, you're in the Pays des Avens, an area where vast caverns lurk just under the surface! Crossing Ronze Wood, with all its holm oaks, you reach La Grande Lauze, an immense limestone slab. Next, you can ride easily along to the village of Aiguèze via the GR4 trail. Finally, you reach the Rhône Valley and the Ardèche border, riding through vineyards and orchards to get to riverside Bourg-Saint-Andéol, a town boasting an extraordinary architectural legacy.

La Grande Traversée de l'Ardèche by MTB from Vallon-Pont-d'Arc to Bourg-Saint-Andéol

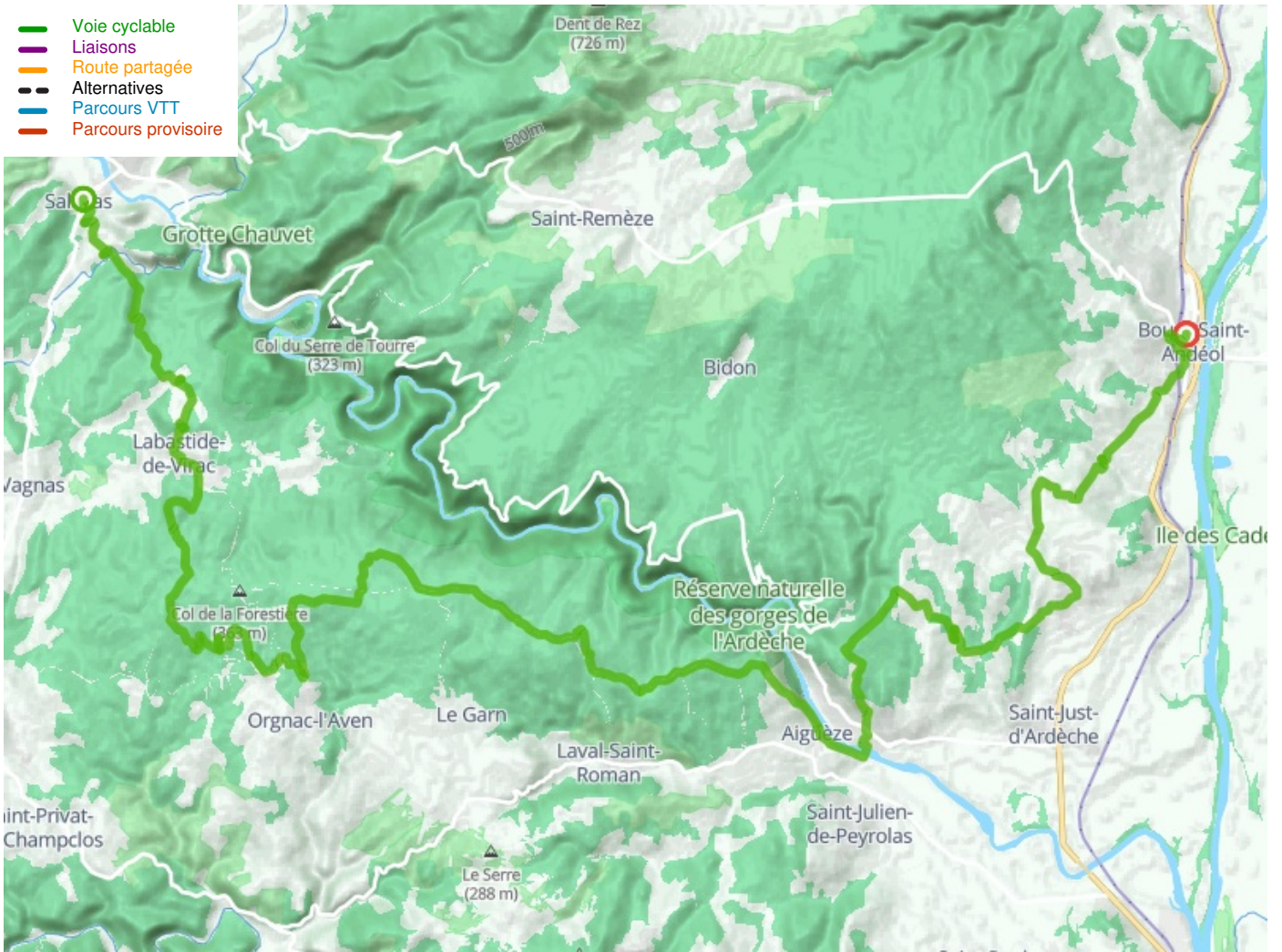
Route signposted "**Grande Traversée de l'Ardèche VTT**"

At the crossroads where you leave the GR4B trail, you then join the GR4 for over 10km.

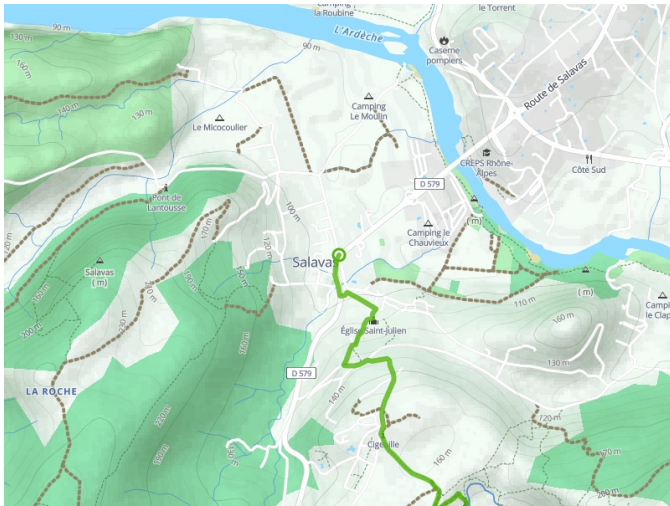
Don't miss

- **Vallon Pont d'Arc:** the Grotte Chauvet 2-Ardèche, with reproductions of prehistoric paintings; the natural stone bridge of Le Pont d'Arc; the Ardèche Gorges
- **Labastide de Virac:** the Château des Roure
- **Orgnac l'Aven:** the Aven d'Orgnac, designated a Grand Site de France, and its Cité de la Préhistoire
- **Aiguèze:** a member of the association Les Plus Beaux Villages de France
- **Saint-Martin d'Ardèche:** Sauze Beach and river bathing
- **Saint-Marcel d'Ardèche:** a string of three remarkable Romanesque chapels (Saint-Sulpice, Saint-Joseph and Saint-Julien) in the midst of vineyards, this stretch designated 'Vignobles & Découvertes'
- **Bourg-Saint-Andéol:** Saint-Ferréol Chapel; the washhouse and re-emergence of springs along the Vallon de Tourne; the Bishops' Palace

- Voie cyclable
- Liaisons
- Route partagée
- - - Alternatives
- Parcours VTT
- Parcours provisoire



Départ
Vallon-Pont-d-Arc



Arrivée
Bourg-Saint-Andéol

