

Buzançais / Châteauroux

Indre à Vélo - Indre by bike



It's a gentle departure from Buzançais, continuing your cycling journey along the Indre Valley via calm roads meandering through typical Berry agricultural lands, not far from the lakes of the Parc Naturel de la Brenne. Before arriving at the town of Châteauroux, there's a short stretch through parkland, via a greenway crossing Saint Gildas Prairie, making for a very easy, pleasant approach to the historic centre.

The route

Signposted route on county and smaller country roads. Approaching Châteauroux, you join a greenway, allowing you to reach the centre of town along a very safe path.

Départ
Buzançais

Arrivée
Châteauroux

Durée
2 h 12 min

Distance
34,40 Km

Niveau
I begin / Family

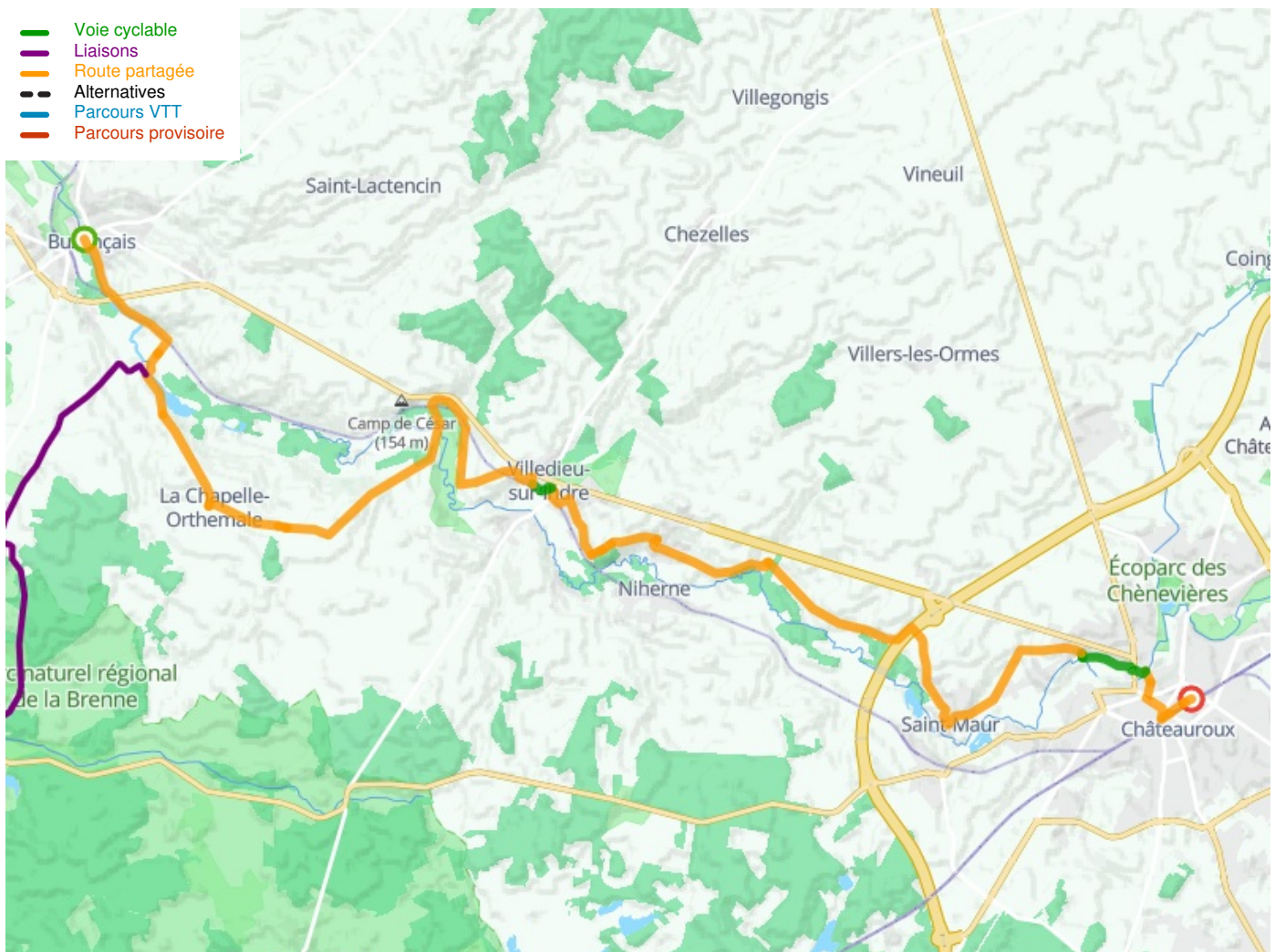
Thématique
Nature & small heritage

Connection :

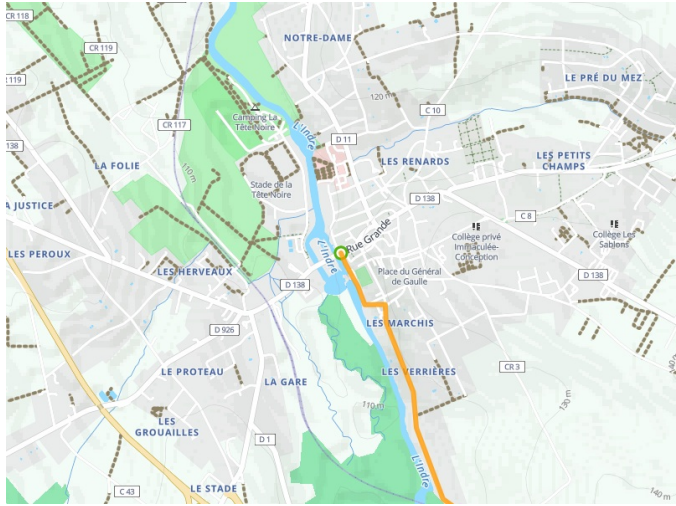
There's an easy, signposted link to the Parc Naturel de la Brenne leaving Buzançais, going via small country roads.

SNCF :

Bus line Châteauroux <> Loches – [see schedule](#)



**Départ
Buzançais**



**Arrivée
Châteauroux**

