

# La Charité-sur-Loire / La Chapelle-Montlinard / Couargues / Pouilly-sur-Loire

## La Loire à Vélo - Loire Valley by bike



**Départ**  
La Charité-sur-Loire

**Arrivée**  
Pouilly-sur-Loire

**Durée**  
52 min

**Distance**  
13,02 Km

**Niveau**  
I begin / Family

**Thématique**  
Canals & intimate rivers

L'île du Faubourg, an island at La Charité-sur-Loire, provides an exceptionally scenic view of the Loire, on the frontier between Burgundy and Centre-Val de Loire, both regions famed for their wines. On this Loire à Vélo stretch through the heart of the Val de Loire Nature Reserve, enjoy the river's wonderful shifting light. This stage is very easy, mainly on greenways.

### Route

After going a short way west on the N 151 road, take the Chemin du Pont de la Batte track, parallel to the D 7 road. Before arriving at the D 7, the track becomes a cycle path. Take care at the D 7 intersection. Continue to the raised Grande Levée Napoléon running beside the Loire.

### Links

You can branch west for the village of Herry via a signposted link.

At the place called Les Vallées, take the D 187 road, then the bridge in the direction of Pouilly-sur-Loire.

### Railway station - SNCF

**Pouilly-sur-Loire train stop (north of La Charité).** You can reach the platform for trains north to Orléans via Avenue de la Gare. For trains south to Nevers, use Chemin des Péchignolles. All Burgundy's TER regional trains accept bikes, but spaces are limited. Intercités trains run Paris > Cosne > Nevers and have spaces for bikes, but you must reserve these in advance.

### Don't miss

**Herry:** St Loup Church; Gallo-Roman vestiges; its stretch of the Canal Latéral à la Loire

**Pouilly-sur-Loire:** its famed vineyards, wine cellars and tasting spots; the Pavillon du Milieu de Loire, a modern museum space dedicated to the great river; numerous discovery trails around the Loire and even along its riverbed.

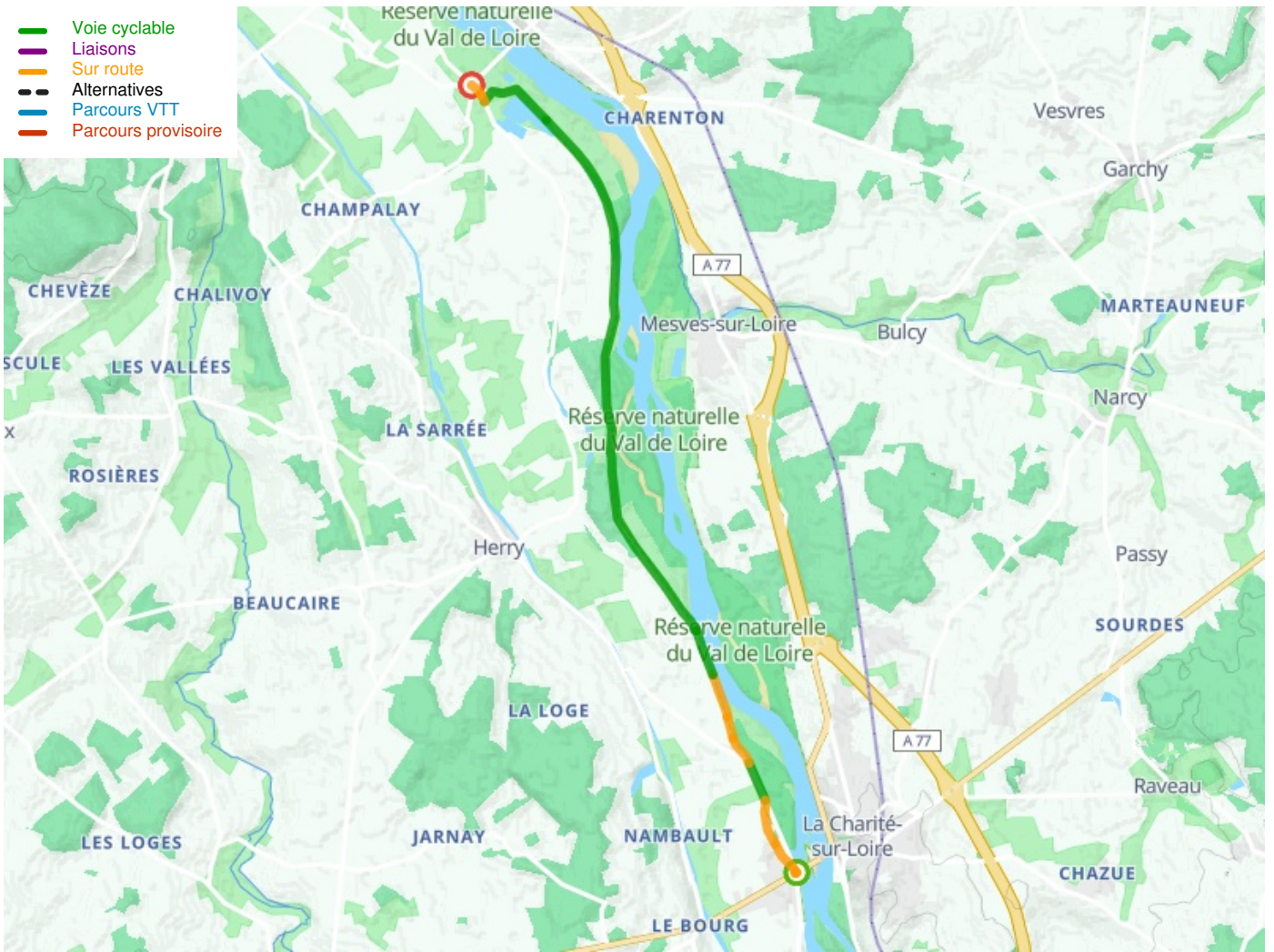
### Market

**Pouilly-sur-Loire** : le vendredi matin.

### Tourist Information centre

**Pouilly-sur-Loire** : +33 (0)3 86 39 54 54

- Voie cyclable
- Liaisons
- Sur route
- - - Alternatives
- Parcours VTT
- Parcours provisoire



**Départ**  
La Charité-sur-Loire



**Arrivée**  
Pouilly-sur-Loire

