

Montluçon / Chambon-sur-Voueize

La Vagabonde



Départ
Montluçon

Arrivée
Chambon-sur-Voueize

Durée
3 h 15 min

Distance
48,96 Km

Niveau
I cycle often

Thématique
Nature & small heritage

The appealing, northern starting point for La Vagabonde cycle route is Montluçon, in the département (French county) of Allier. This mellow, musically-minded town is overseen by its ducal Bourbon castle. Wander through the medieval quarter below, seek out the exotic-style villas designed by architect Pierre Diot in the first half of the 20th century, and follow the melodious trail at the MUPOP (or MUSée des Musiques POPulaires). Our cycle route then proposes a gentle-paced start, this stage beginning with a 6km-ride along a comfortable, lovely greenway linking Montluçon to the little thermal spa resort of Nérès-les-Bains. The rhythm then changes as you tackle the first hilly roads through the Combraille area, its landscapes offering a mix of hedge-divided fields, heathery moors and forests. The village of Chambonchard, crossed by the Cher River, marks your arrival in the département (county) of Creuse (boasting its own thermal spa resort, Evaux-les-Bains) as you head for Chambon-sur-Voueize, a green town set beside a crystal-clear river.

The Route

Leaving southeast out of Montluçon via Avenue J.-F. Kennedy, ride along a 6km-long greenway to Nérès-les-Bains. Then the cycle route meanders along the Cournauron Valley via the RD155 road, up to Villebret. Cyclists need to go around the church here and head on towards Terjat. After 1.7km, turn right in the direction of Saint-Genest, following the RD452 road. Having crossed this little town, turn left onto the RD50 road for Sainte-Thérence, the route steeper heading to Mazirat. In this village, cyclists need to turn left onto the RD350 road towards La Petite Marche, then to plunge down along the RD109 road in the direction of Chambonchard, having crossed the Cher River. You reach the Tour de Creuse cycle route at Chambon-sur-Voueize.

Practical information

Tourist Offices

[Office de tourisme de la Vallée du Coeur de France](#) 7Ter Bd de Courtais 03100 Montluçon - 04 70 05 11 44

[Office de Tourisme et d'Animation](#) 2 avenue Marx Dormoy 03310 Nérès-les-Bains - 04 70 03 11 03

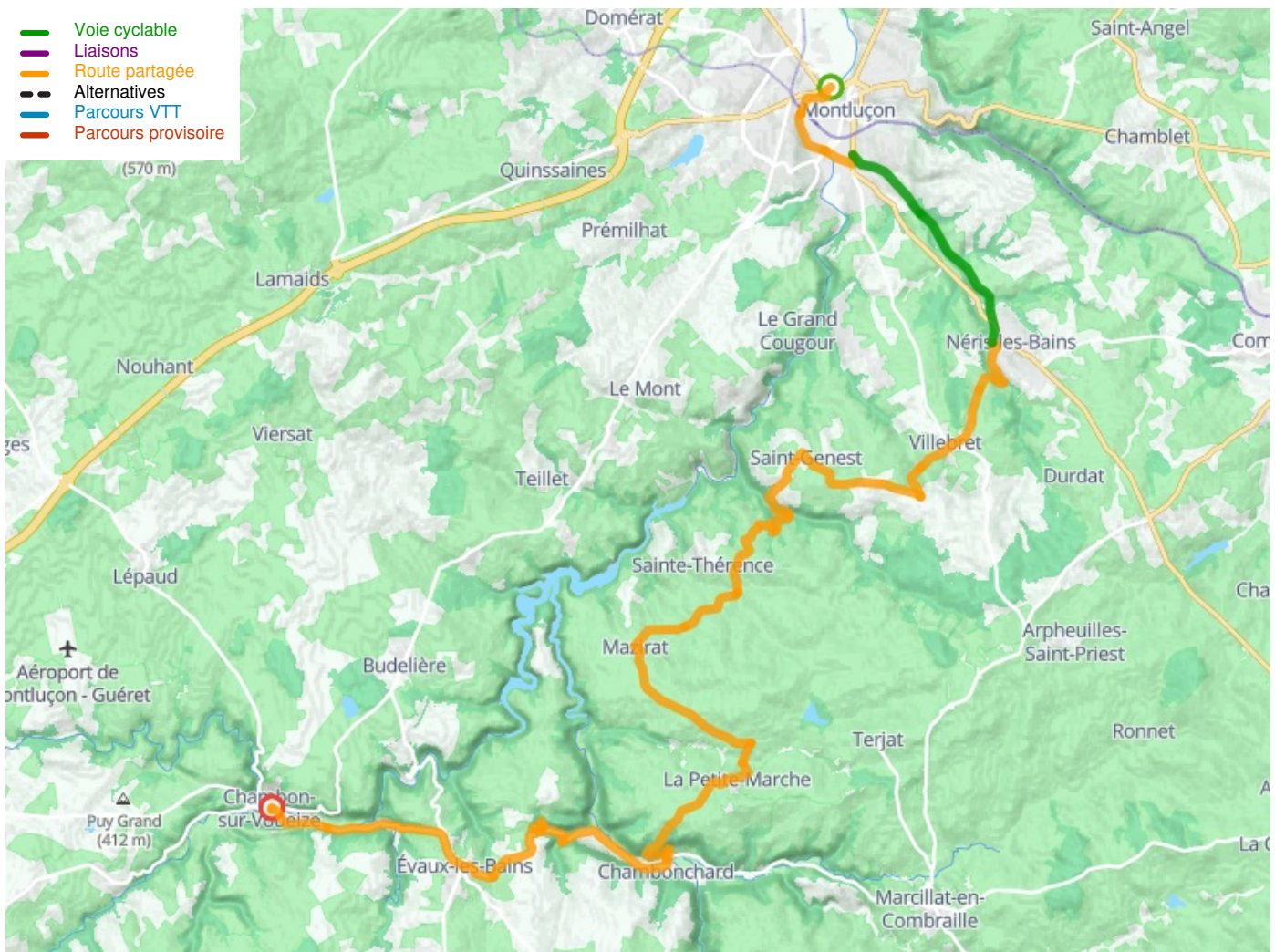
[Creuse Confluence Tourisme](#) Place Serge Cléret 23110 EVAUX-LES-BAINS - 05 55 65 50 90

SNCF train stations

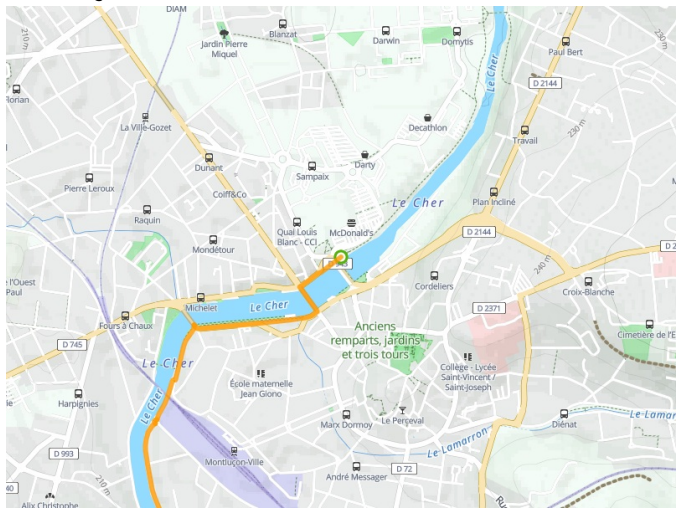
- Gare de Montluçon

Don't miss

- **Montluçon**: a town with a rich heritage, including a medieval quarter, making the old heart of town a fascinating place to explore.
- **Nérès les Bains**: a small spa town set in green surroundings, originally established back in Gallo-Roman times, its natural thermal waters long celebrated and said to have significant calming properties, the place today preserving a Belle Époque charm, with its many period villas and its theatre.
- **Nearby**: the Château de l'Ours de Sainte Thérence standing out along the Cher Valley some 9km south of Montluçon, its medieval ruins, reached via a narrow track, offering remarkable views over the valley.



**Départ
Montluçon**



**Arrivée
Chambon-sur-Voueize**

