

Niort / Coulon

La Vélo Francette: Normandy / Atlantic by bike



You stick close to the water's edge, following the meanders of the Sèvre Niortaise River, alternating between the towpath and quiet riverside roads. The sites of Roussille or La Garette offer ideal spots for a pause in these winding parts. Or consider a longer halt at the little capital of the Marais Poitevin, the gorgeous, watery village of Coulon.

The route

Signposts indicate La Vélo Francette. Much of the way is along the Sèvre Niortaise towpaths, with some stretches on roads with motorised traffic. Numerous little bridges allow you to switch from one bank to the other, offering you different perspectives on the river.

Tourist Offices

- [Niort Marais Poitevin-Vallée de la Sèvre Niortaise Tourist Office](#)
- [Niort Marais Poitevin-Vallée de la Sèvre Niortaise Tourist Office \(Coulon branch\)](#)

SNCF Train Services

Niort train station: high-speed TGV and regional TER services, line 13 Poitiers > Niort > La Rochelle
Lines 11 et 13 Paris > Angoulême ou Niort > Saintes > Royan
www.ter.sncf.com/poitou-charentes

Buses

Line T : Niort > Magné > Coulon
<http://mobilite79.fr/>

Don't miss

Niort: the Coulée Verte ('Green Corridor') along the Sèvre Niortaise River; the massive twin Romanesque keeps; the covered market (market days are Thursdays, Saturdays, and Sunday mornings); the churches, including the Protestant one; the townhall; the former townhall, the Pilon, with its great tower; the Jardins de la Brèche Gardens...

St-Liguaire: the rope ferry at Port Lateau; the lock at La Roussille, plus a gastronomic inn in an idyllic location

Coulon: a village in the heart of the Parc Naturel Régional du Marais Poitevin, designated a Grand Site de France thanks to its exceptional environment; the Maison du Marais Poitevin visitor centre, presenting the way the marshes were tamed by man and set in the last medieval manor still standing in the village; Holy Trinity Church; the port, offering all manner of outings on the waters.

Départ
Niort

Arrivée
Coulon

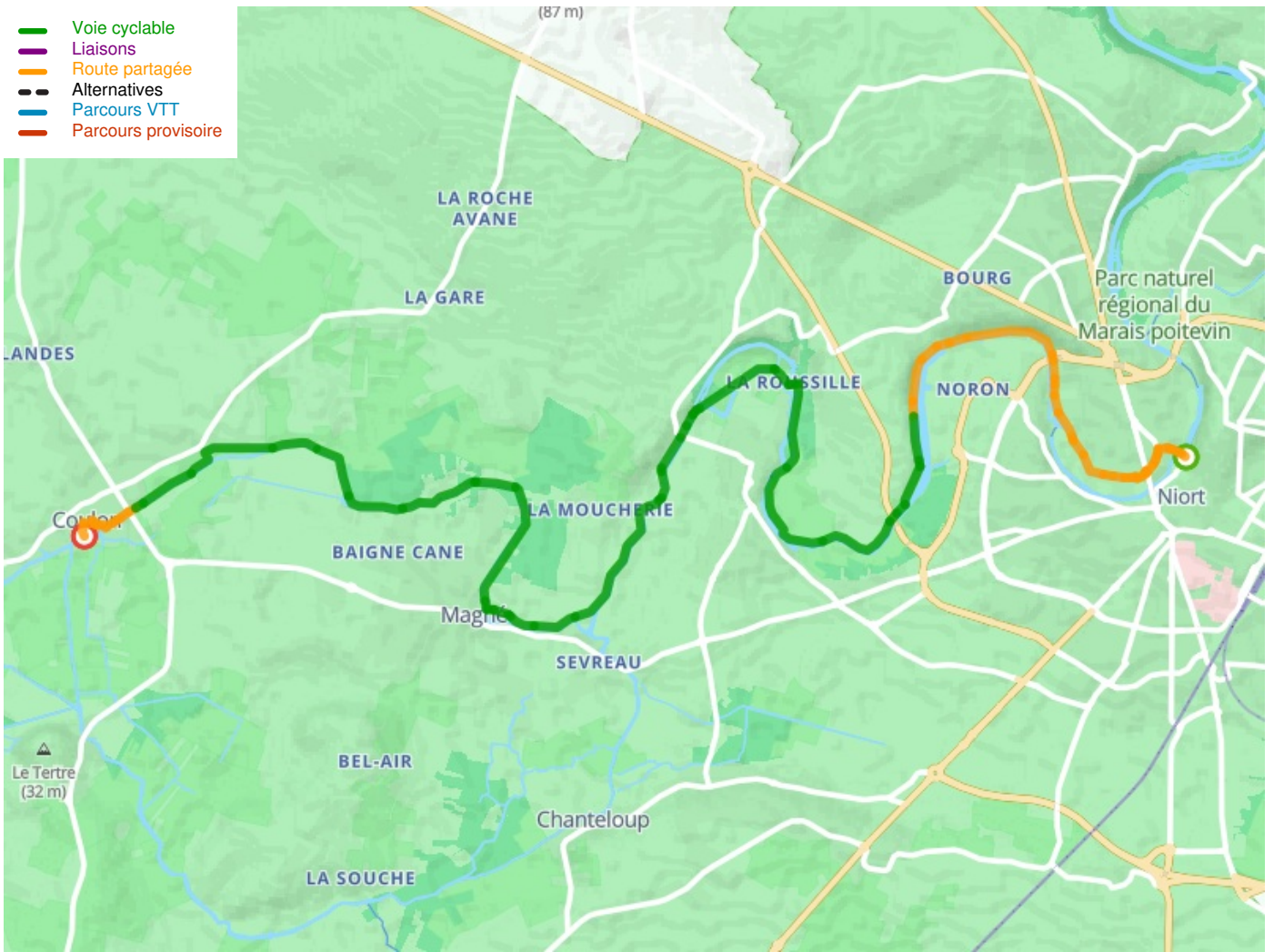
Durée
1 h 13 min

Distance
17,25 Km

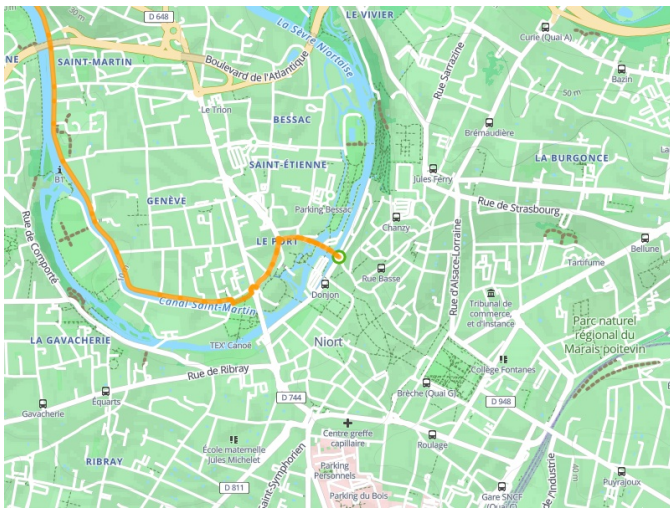
Niveau
I begin / Family

Thématique
Canals & intimate rivers,
Nature & small heritage

- Voie cyclable
- Liaisons
- Route partagée
- Alternatives
- Parcours VTT
- Parcours provisoire



**Départ
Niort**



**Arrivée
Coulon**

