

Saint-Hilaire-du-Harcouët / Mortain-Bocage

La Vélomaritime / EuroVelo 4



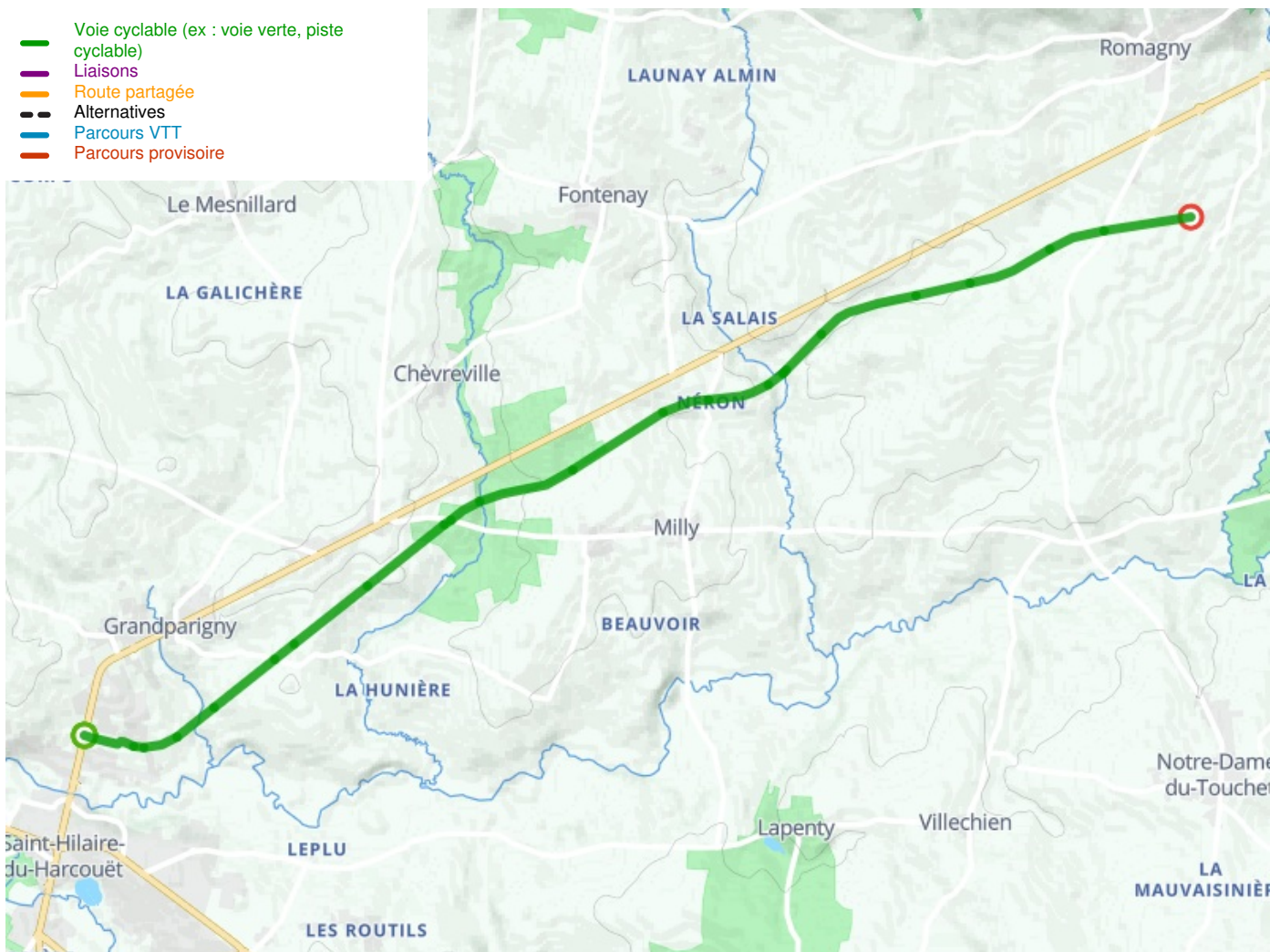
Leading you along slopes, this Vélomaritime stage guides you gently towards Mortain, at the green heart of Normandy's extensive area of typical hedge-divided fields, known as the bocage, and located where our route meets the Véloscénie cycle route. The greenway on this stage takes you close to the enchanting Cance waterfall. Do go and see it in its wild, steep setting, clearly showing how this part of Normandy is part of the wider Armorican granite peninsula.

The route

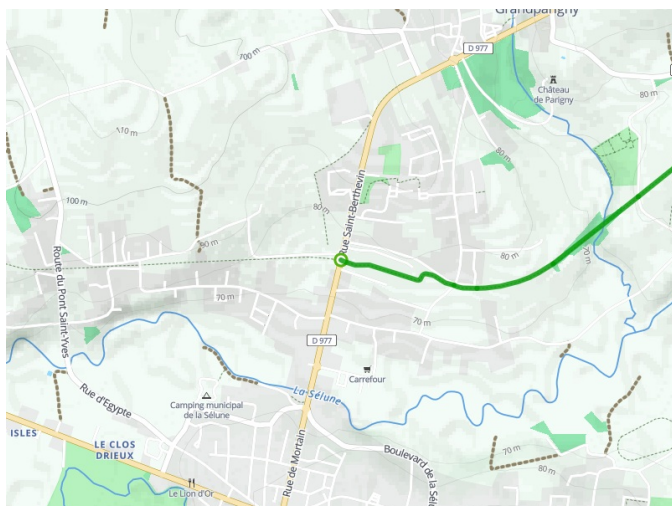
Greenway up to Mortain. Take care crossing roads.

Départ Saint-Hilaire-du-Harcouët	Arrivée Mortain-Bocage
Durée 43 min	Distance 10,97 Km
Niveau I begin / Family	Thématique Old railway

- Voie cyclable (ex : voie verte, piste cyclable)
- Liaisons
- Route partagée
- Alternatives
- Parcours VTT
- Parcours provisoire



Départ
Saint-Hilaire-du-Harcouët



Arrivée
Mortain-Bocage

