

Port-sur-Saône / Ray-sur-Saône

La Voie Bleue - Moselle-Saône valley by bike



From Port-sur-Saône, La Voie Bleue cycle route heads off along unspoilt meanders in the Saône, in the direction of Ray-sur-Saône, a pretty village designated a Cité de Caractère Bourgogne-Franche-Comté. Scey-sur-Saône, along with its islands, makes for a restful stop, close to the St-Albin Tunnel, 681m in length, dug in the mid-19th century under Napoleon III's reign. Rupt-sur-Saône's keep and the château at Ray-sur-Saône are unmissable sights marking your route. The river port at Ray-sur-Saône can offer all the comforts for a well-deserved rest beneath the elegant castle dominating the Saône Valley from its rocky promontory.

The route

On this stage, the way alternates between greenways, towpaths and short stretches on county roads that aren't especially busy. Be aware that there is a 300m portion along cobbles at the level of Rupt-sur-Saône. There are short slopes around the St-Albin Tunnel and at Ray-sur-Saône. This stage is enjoyable for families, excluding accessing Port-sur-Saône.

Warning: Crossing Scey-sur-Saône, there is a section that is not specially laid out for cyclists. Also note that even on the sections of the stage that are not open to motorized traffic, you may encounter local anglers' cars and maintenance vehicles.

Link EuroVelo 6 to Vesoul

At the level of the confluence with the Durgeon at Chemilly, 'La Trace du Courlis' ('The Curlew's Way') leads you to the town of Vesoul, then along Le Chemin Vert towards the EuroVelo 6 cycle route, allowing you to reach Roulans on the banks of the Doubs River. The greenway stops at the level of Loulans-Verchamp, so you then continue into the hills of the département (or French county) of Doubs on roads shared with motorized traffic. This entails 22km on small, quiet roads, but these are quite steep and require a high level of fitness.

SNCF (French national railways network)

TER line Paris-Vesoul-Belfort

Don't miss

- **Chemilly:** confluence of the Saône and Durgeon rivers
- **Le Barnayout:** A nice thirst-quenching and culinary stopover upstream from the Saint-Albin tunnel.
- **Scey-sur-Saône** river port and banks of the Saône - City of character Burgundy-Franche-Comté.
- Nearby, the forges of **Baignes:** you will relive the industry of the area (stoves, cauldrons, waffle makers).

Départ

Port-sur-Saône

Arrivée

Ray-sur-Saône

Durée

2 h 10 min

Distance

32,63 Km

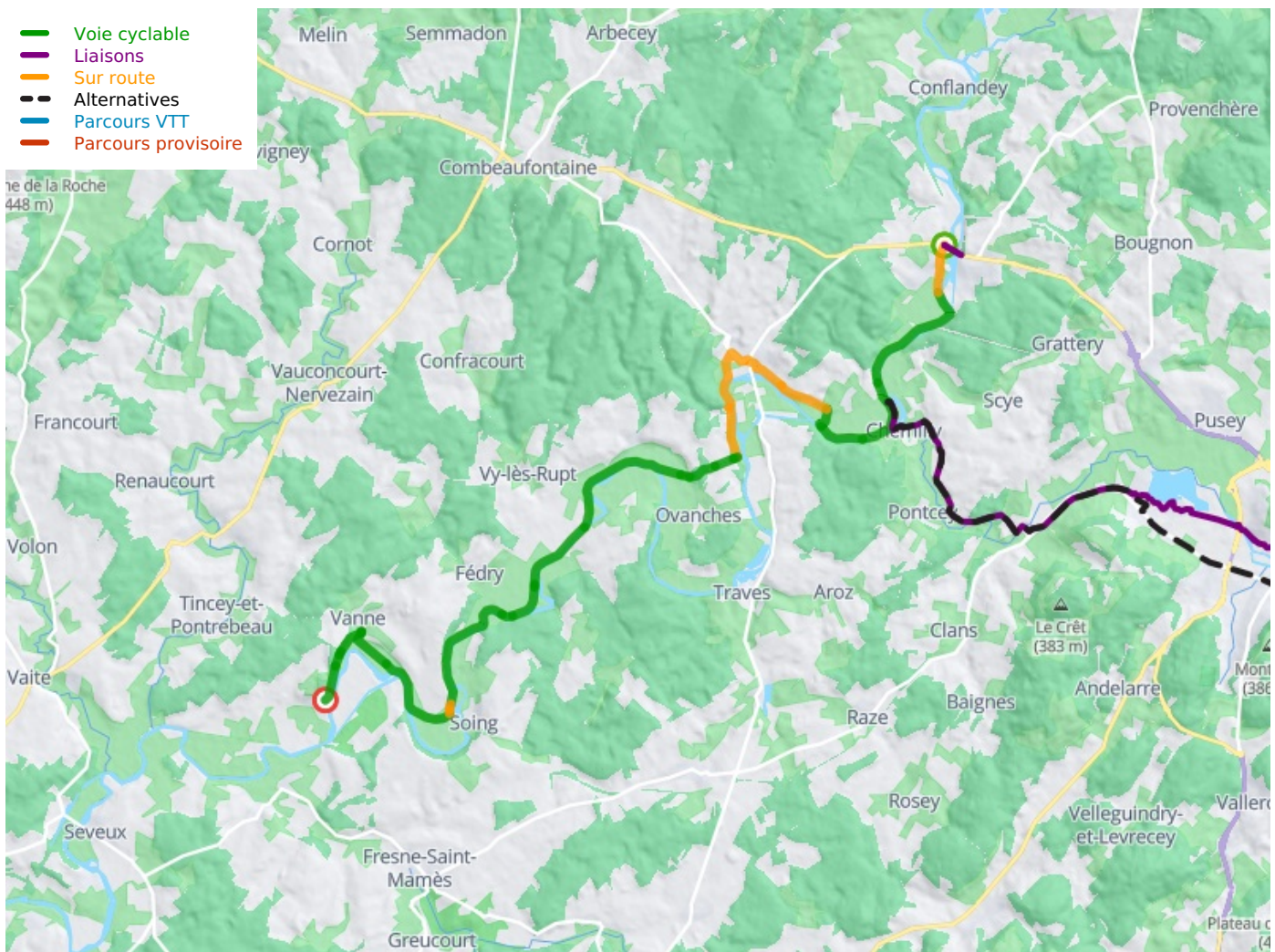
Niveau

I begin / Family

Thématique

Canals & intimate rivers

- **Ray-sur-Saône** : also labelled Cité de Bourgogne-Franche-Comté and its castle, dominate the Saône valley. It is situated in the middle of a 6 ha English style park, a real green setting.
- **Saint-Albin canal-tunnel**: 681 m long and built under Napoleon III.
- **Rupt-sur-Saône**: castle with keep, manor house, orange grove, hunting lodge
- **Traves**: its pierced stones megalithic constructions
- **Neuville-les-la-Charité**: and its Belvaux Abbey, whose buildings are listed as Historic Monuments.
- **Ray-sur-Saône**: castle, city of character of Burgundy Franche-Comté



Départ
Port-sur-Saône



Arrivée
Ray-sur-Saône

