

Châteauneuf-du-Faou / Carhaix-Plouguer

Le Canal de Nantes à Brest



Départ
Châteauneuf-du-Faou

Arrivée
Carhaix-Plouguer

Durée
2 h 50 min

Distance
32,16 Km

Niveau
I begin / Family

Thématique
Canals & intimate rivers

The bike trip on the Canal de Nantes à Brest continues through the heart of the Aulne valley. Immediately after leaving Châteauneuf-du-Faou, you can see the Château de Trévarez in the distance, which has been awarded the "Patrimoine du XXe siècle" label. A remarkable 85-hectare garden surrounds this exhibition site. As you pedal along the towpath, take time to observe this beautiful, wooded, unspoilt valley as it flows by. Herons, ducks and cormorants may also be seen along the way. The further upstream you go towards Carhaix, the narrower the canal becomes, and the locks get closer, even giving the impression of a slight rise.

The cycle route

Take care when crossing the old railroad bridge at Pont Triffen. At this point, you can choose to follow the old railroad line transformed into a greenway, or continue along the towpath (V6 - Canal de Nantes à Brest) to Port-de-Carhaix. To reach Carhaix town center, take the Kergaden lock.

Continue your journey on La Vélodyssée, Voie 7 or Voie 6

Port-de-Carhaix is a junction for several cycle routes, so make sure you take the right direction:

- Towards Nantes on the Canal de Nantes à Brest / [La Vélodyssée](#)
- Towards Roscoff on La Vélodyssée / [Voie 7](#)
- Towards Concarneau on [Voie 7](#)
- To Saint-Méen-le-Grand on [Voie 6](#)

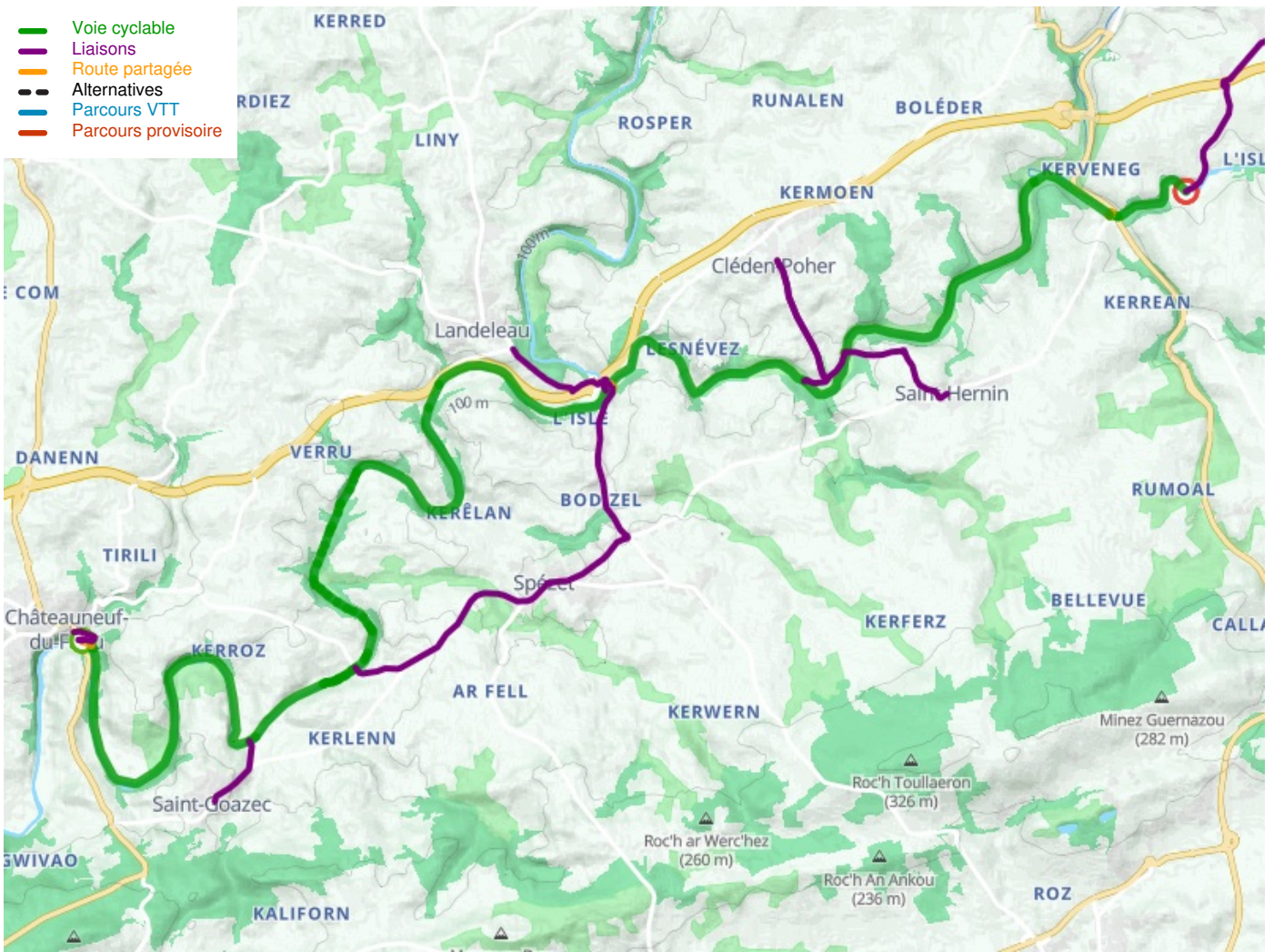
Bus (with bike loading)

Possibility of return trip between Châteaulin and Carhaix (stop also possible at Pont-Triffen) or between Carhaix and Châteaulin by loading your bike onto the [BreizhGo buses](#).

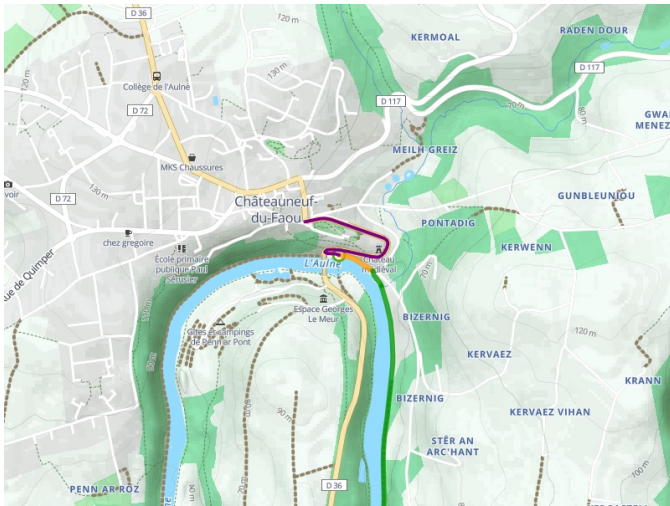
Don't miss

- **Saint-Goazec** : Trévarez park and château

- Voie cyclable
- Liaisons
- Route partagée
- - - Alternatives
- Parcours VTT
- Parcours provisoire



Départ
Châteauneuf-du-Faou



Arrivée
Carhaix-Plouguer

