

# Cercy-la-Tour / Châtillon-en-Bazois

## Le Tour de Bourgogne by bike



**Départ**  
Cercy-la-Tour

**Arrivée**  
Châtillon-en-Bazois

**Durée**  
2 h 21 min

**Distance**  
35,41 Km

**Niveau**  
I begin / Family

**Thématique**  
Canals & intimate rivers

This stage of the Nivernais Canal by Bike takes you through the Bazois area, where cattle are reared. Enjoy the countryside dotted with castles and churches as well as forests and pastures, the last filled with white herds. After further meanders, including the striking one at Panneçot, the canal races in a straight line to join the Loire.

### Route details

Unbroken greenway alongside the canal.

### SNCF train services

Train station at Cercy-la-Tour.  
TER regional line Dijon > Montchanin > Decize > Nevers (c. 9 trains per day on weekdays).  
There are no train services between Cercy, Corbigny and Auxerre; consider the option of using a specialist private minibus shuttle service - see <http://www.navette-nivernais.fr>

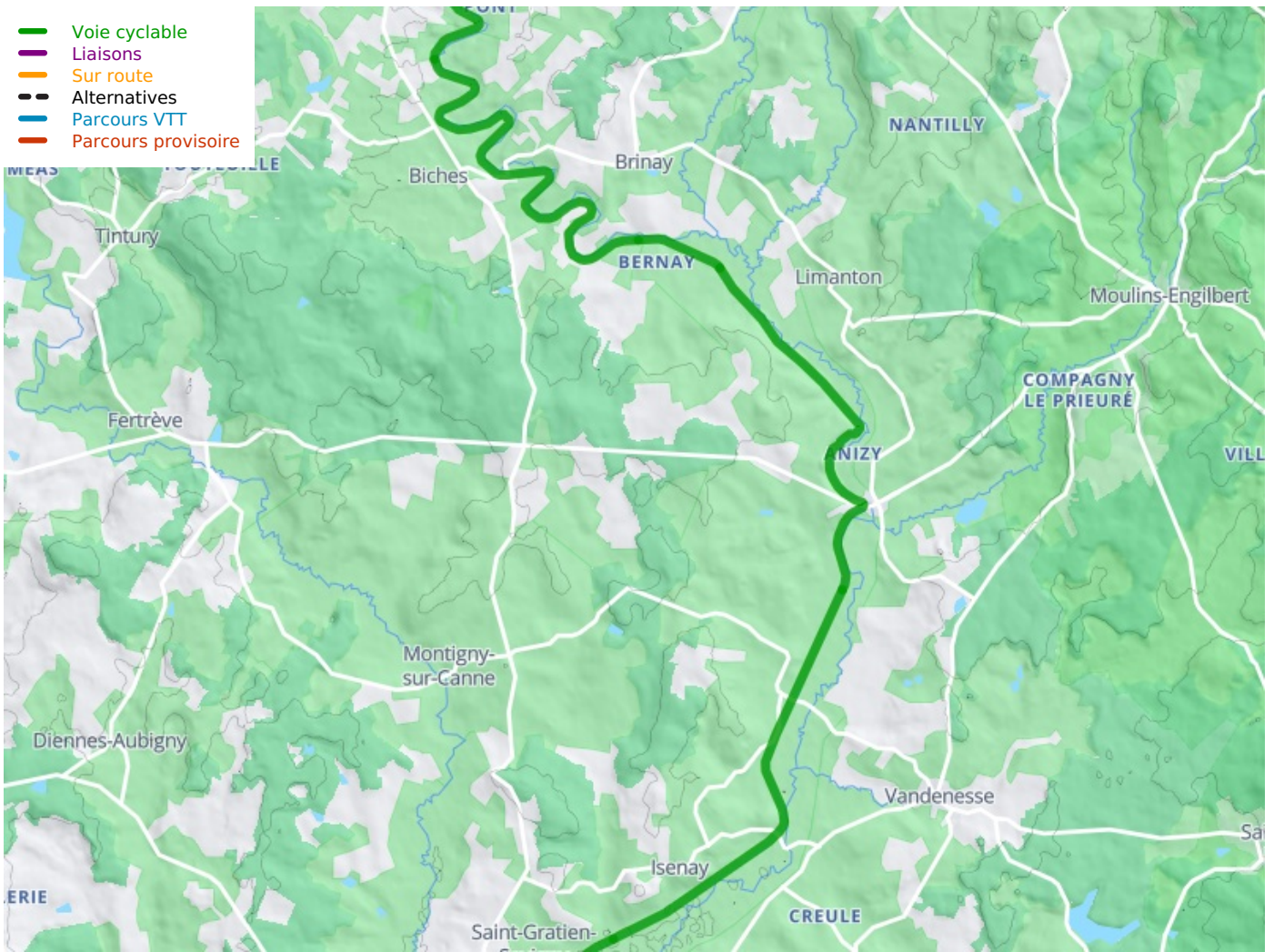
### Don't miss

Châtillon-en-Bazois: a lively village with a significant historic port- Château de Châtillon: castle still lived in and furnished, with landscaped grounds, orangery and kitchen gardens, open to visitors daily on guided tours 15/07 to 29/08, tel 03 86 84 12 15 - Biches: its dam built of wooden posts - Limanton : château (private), with a listed garden (jardin remarquable), open to visitors in July and August, by rendez-vous, tel 03 86 84 90 33 - Panneçot: a little port tucked away in the Aron Meander - the historic toll - Cercy-la-Tour: a village with medieval roots.

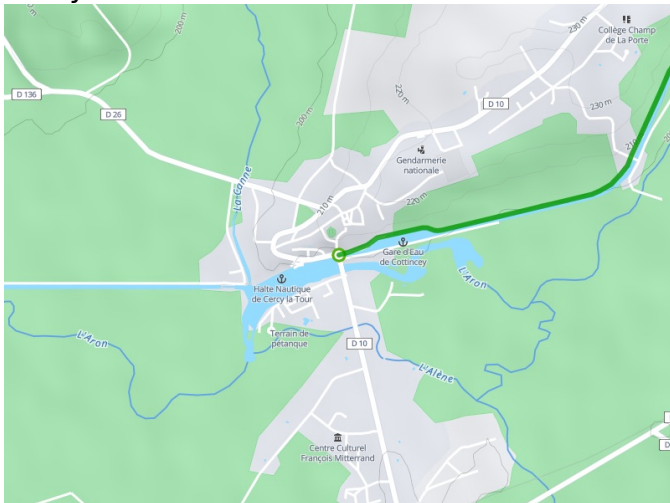
### Markets

Châtillon-en-Bazois: Thursday mornings  
Cercy-la-Tour: 2nd and 4th Thursdays of each month  
Moulins-Engilbert: Tuesday mornings (6 km from Panneçot)

- Voie cyclable
- Liaisons
- Sur route
- Alternatives
- Parcours VTT
- Parcours provisoire



**Départ**  
Cercy-la-Tour



**Arrivée**  
Châtillon-en-Bazois

