

La Bussière-sur-Ouche / Dijon

Le Tour de Bourgogne by bike



Départ
Bussière-sur-Ouche

Arrivée
Dijon

Durée
2 h 13 min

Distance
33,39 Km

Niveau
I begin / Family

Thématique
Canals & intimate rivers

Starting from Pont-de-Pany, this stage of the Canal de Bourgogne à Vélo links the Burgundy countryside to its capital. Lovely surprises lie tucked away in this stretch of the Ouche Valley, where wealthy Dijon families used to come to relax. You arrive in the city of Dijon via Lake Kir and its large park much appreciated by families and sporty types.

Route details

A greenway plus cycle tracks lead you to Dijon's river port. One stretch takes you alongside the A 38 motorway. There's a link to Dijon city centre from the port.

SNCF train services

Velars train station:

TER regional line Dijon > Velars > Migennes (c. 12 trains per day).

Dijon train station:

TER regional trains serve all the different corners of Burgundy from Dijon.

TGV high-speed line Paris > Montbard > Dijon > Chalon, with limited spaces for bikes if you book in advance (room for up to 6 bikes per train, by reservation only).

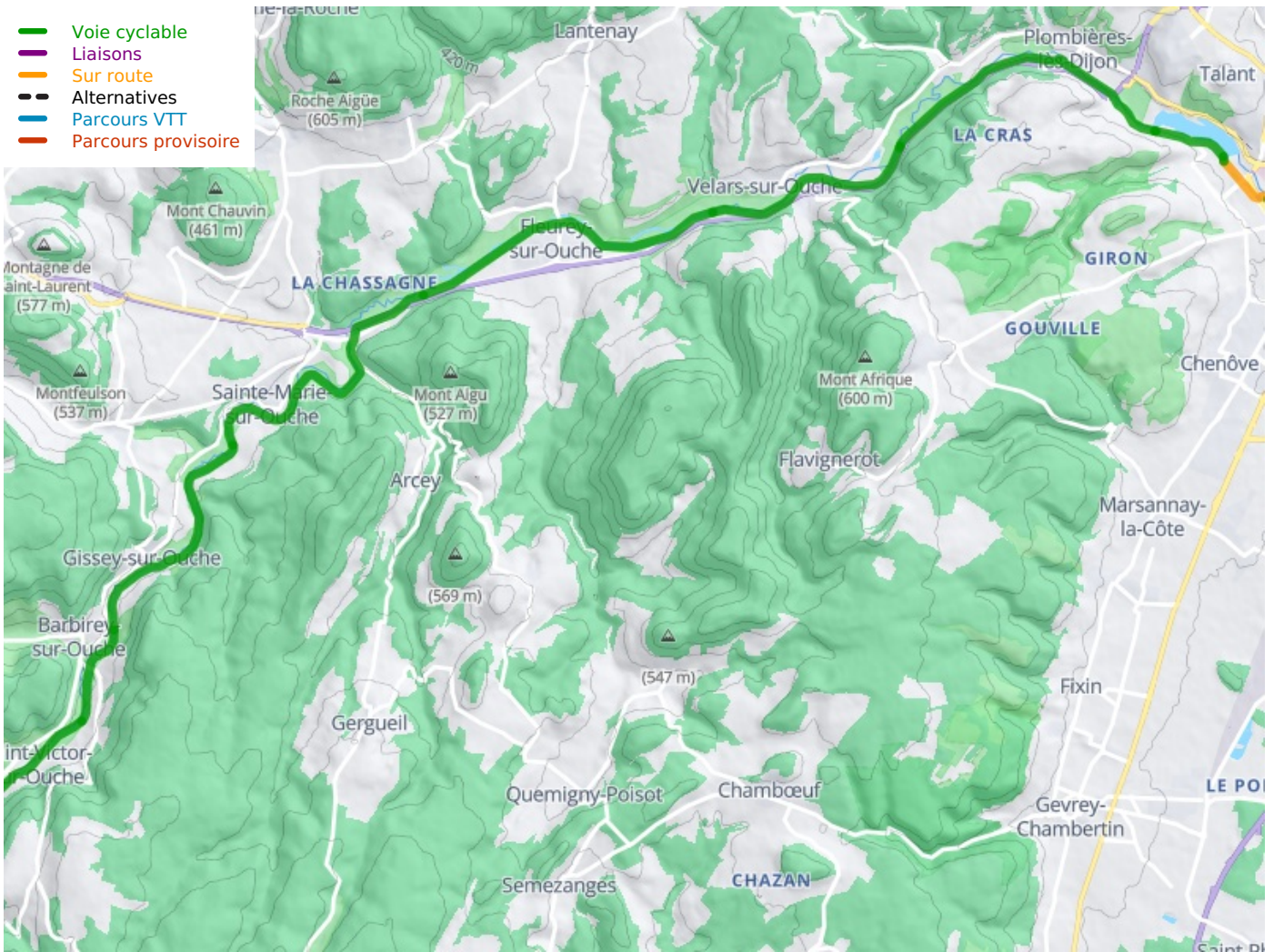
Don't miss

Pont-d'Ouche: a strategic site - La Bussière-sur-Ouche: remarkable village and church - its historic abbey founded in the 12th century (now a luxury hotel and restaurant) - Saint-Victor-sur-Ouche: look out for the programme of events at La Charme Lock (n° 28) - Barbirey-sur-Ouche: the château's gardens, open to visitors May to October, tel 03 80 49 08 81 - Pont-de-Pany: a little port at a junction of waterways - Plombières-lès-Dijon: with pretty houses beside the Ouche - church with painted tiles - Dijon: designated a Ville d'Art et d'Histoire thanks to its rich historic and cultural heritage - numerous free, grand museums - all the shops and amenities of a big city.

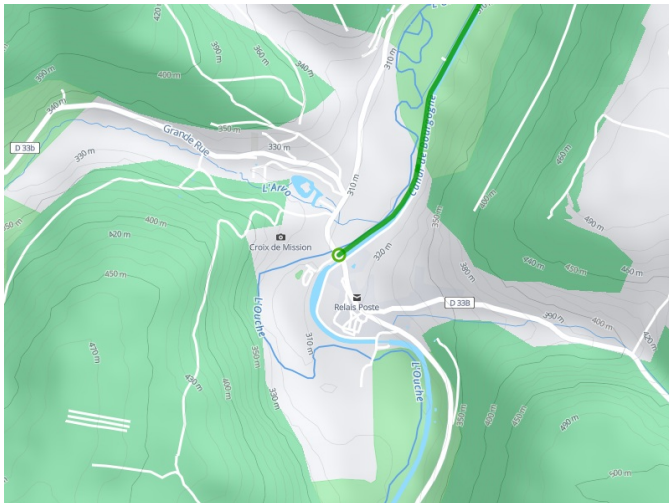
Markets

Dijon: Tuesday, Friday, Saturday (in the covered market)

- Voie cyclable
- Liaisons
- Sur route
- - - Alternatives
- Parcours VTT
- Parcours provisoire



Départ
Bussière-sur-Ouche



Arrivée
Dijon

