

# Entrelacs / Saint-Jean-de-Chevelu

## P'tites Routes du Soleil



Climbing to the Montagne de l'Épine, make the most of views from on high over France's largest natural lake, 18km in length, created by the melting of glaciers in the distant past. The Tour du Lac du Bourget à Vélo is one of the classic cycling circuits to enjoy in the French département, or county, of Savoie. Sticking to the P'tites Routes du Soleil®, you'll only do half of this Tour, riding above the unspoilt side of the lake, a refuge for fish and birds. Having scaled the Col de la Chambotte (a pass at 650m in altitude) and the Col du Chat (633m), you leave Lac du Bourget behind as you head for the Avant-Pays Savoyard area.

### Don't miss

- **Hautecombe Abbey:** from the heights of Saint-Pierre-de-Curtille, look down upon this lakeside monastery, originally built in the 12th century for Cistercian monks, later to become famous as the resting place of the lords and princes of the House of Savoie (or Savoy).
- **Lac du Bourget:** France's largest natural lake, 18km in length, encircled by the mountains of the Massif de l'Épine, the Mont du Chat, La Chambotte, Mont Revard and Les Bauges. Many a French poet wrote passionately about the place. Now, it offers all manner of resorts and water sports. On the opposite bank from the lakeside town of Aix-les-Bains and a stretch nicknamed France's Alpine Riviera, the more unspoilt, western side of the lake is characterized by wooded mountainsides that tumble straight into the lake's waters.
- **Chanaz:** set beside the Canal de Savière, a waterway linking Lac du Bourget to the Rhône, this village has been awarded Petite Cité de Caractère status for its historical and cultural attractions and is well worth visiting. Located a very short distance from the ViaRhôna cycle route, its little port is prettified by arts and crafts shops and boutiques selling local produce, plus you can embark on lake cruises from here

**Départ**  
Entrelacs

**Arrivée**  
Saint-Jean-de-Chevelu

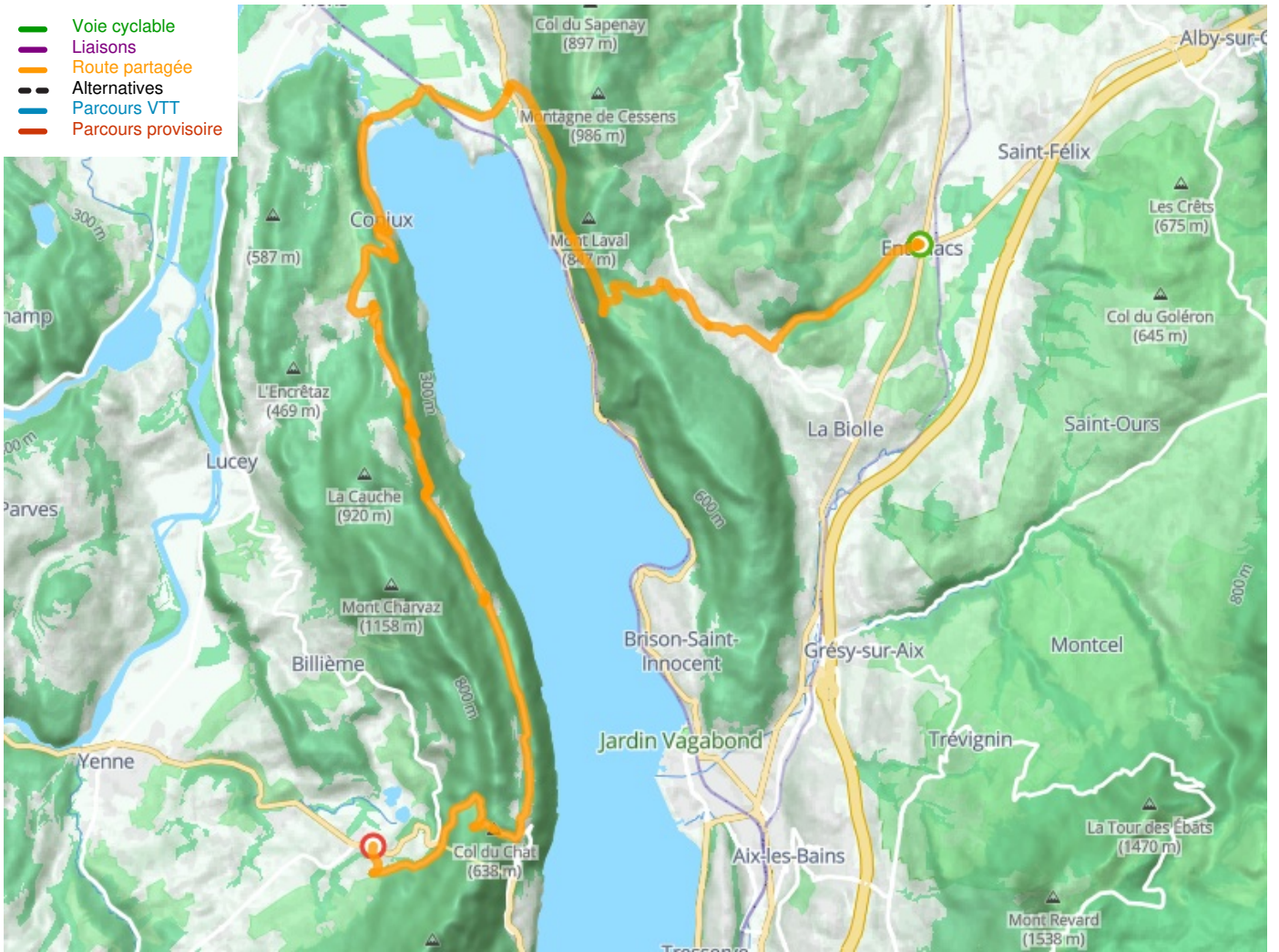
**Durée**  
2 h 27 min

**Distance**  
36,87 Km

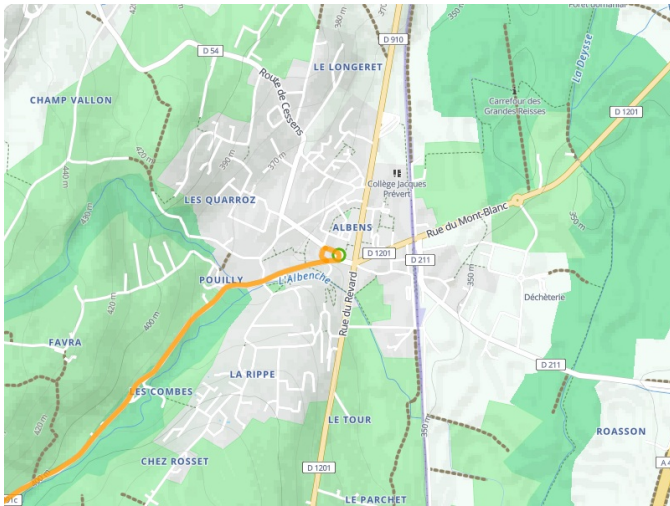
**Niveau**  
I cycle a lot

**Thématique**  
Mountains

- Voie cyclable
- Liaisons
- Route partagée
- - - Alternatives
- Parcours VTT
- Parcours provisoire



**Départ**  
Entrelacs



**Arrivée**  
Saint-Jean-de-Chevelu

