

Rambouillet / Maintenon

Saint-Jacques by bike - Via Tours



Départ
Rambouillet

Arrivée
Maintenon

Durée
2 h 12 min

Distance
33,15 Km

Niveau
I cycle often

Thématique
Castles & Monuments

The Saint-Jacques cycling route begins through the English garden of Domaine de Rambouillet to reach the Guéville valley, bordered by its small roads. Halfway there, you will discover the medieval city of Epernon, "Petite Cité de Caractère" perched at the confluence of three rivers. Shortly afterwards, the entrance to the royal valley of the Eure offers a country walk on the road to the castle of Maintenon which sheltered the loves of the Sun King and Madame de Maintenon.

The route

This stage crosses the park of the Château de Rambouillet, then takes rural roads and small roads with little traffic, marked "Saint-Jacques à vélo".

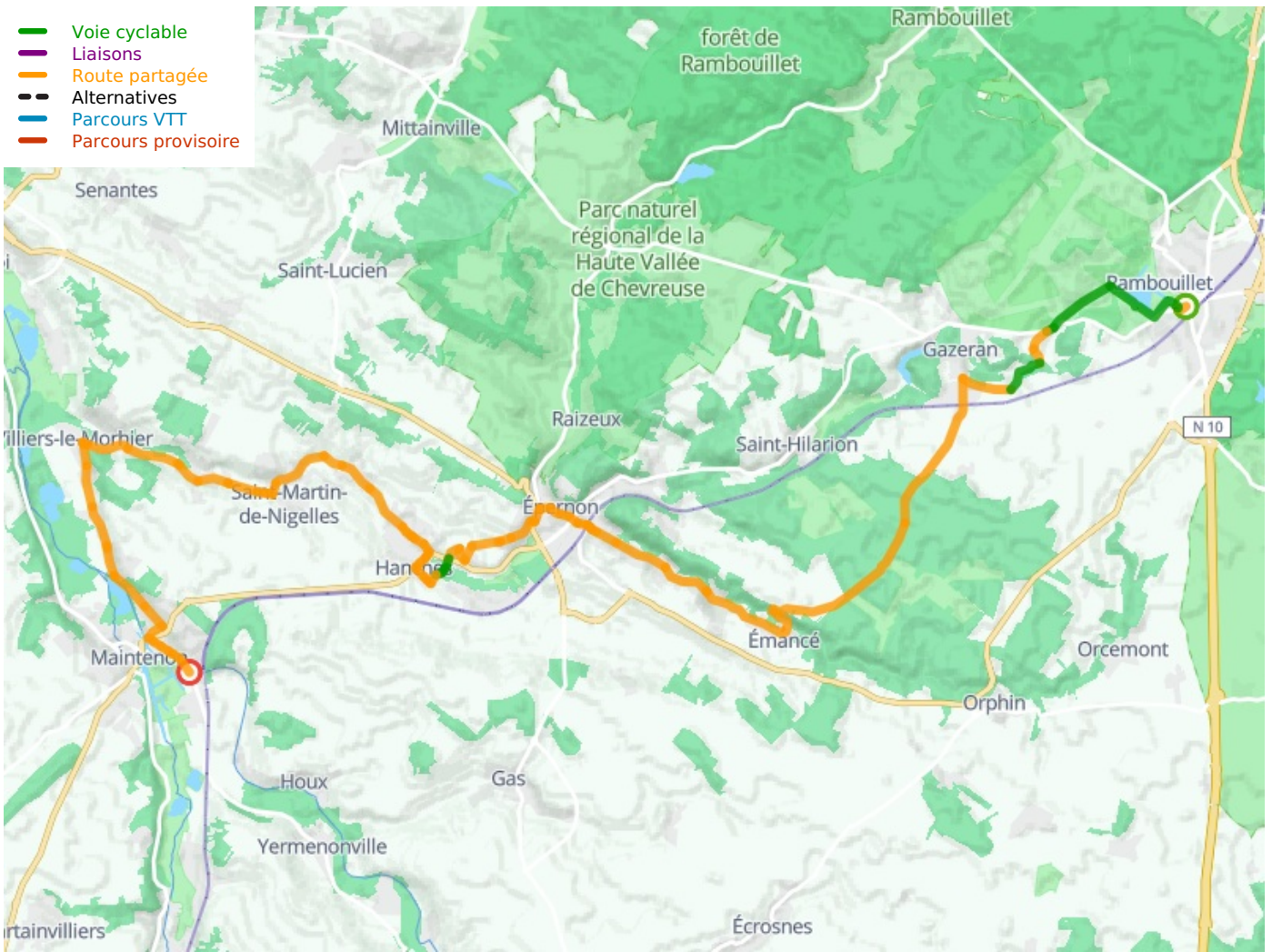
⚠ When the Château de Rambouillet park is closed, take the RD906 to catch up with the road to Guéville along the estate.

From Epernon, the route follows small roads along the Drouette, through the Eure valley, to Maintenon. Common stage with the Veloscénie itinerary (double signposting).

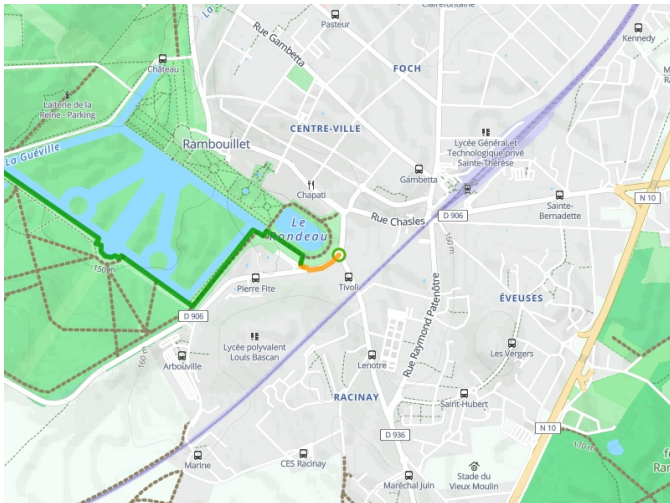
SNCF

- Rambouillet train station
- Épernon train station
- Maintenon train station

- Voie cyclable
- Liaisons
- Route partagée
- - - Alternatives
- Parcours VTT
- Parcours provisoire



**Départ
Rambouillet**



**Arrivée
Maintenon**

