

Montreuil-sur-Ille / Rennes

Saint-Malo to Arzal - Cycle route 2 in Brittany



Départ
Montreuil-sur-Ille

Arrivée
Rennes

Durée
2 h 14 min

Distance
32,11 Km

Niveau
I begin / Family

Thématique
Canals & intimate rivers,
Nature & small heritage

This stage meanders along the Ille's east bank up to St-Grégoire. The canalized river is ideal for waterways tourism, fishing and jogging. Arrival in Rennes, Brittany's capital, is easy – the cycle track along the canal towpath takes you right into the centre to discover Rennes's rich heritage and culture (hence its designation as a Métropole d'Art et d'Histoire). This stage is suitable for all cyclists.

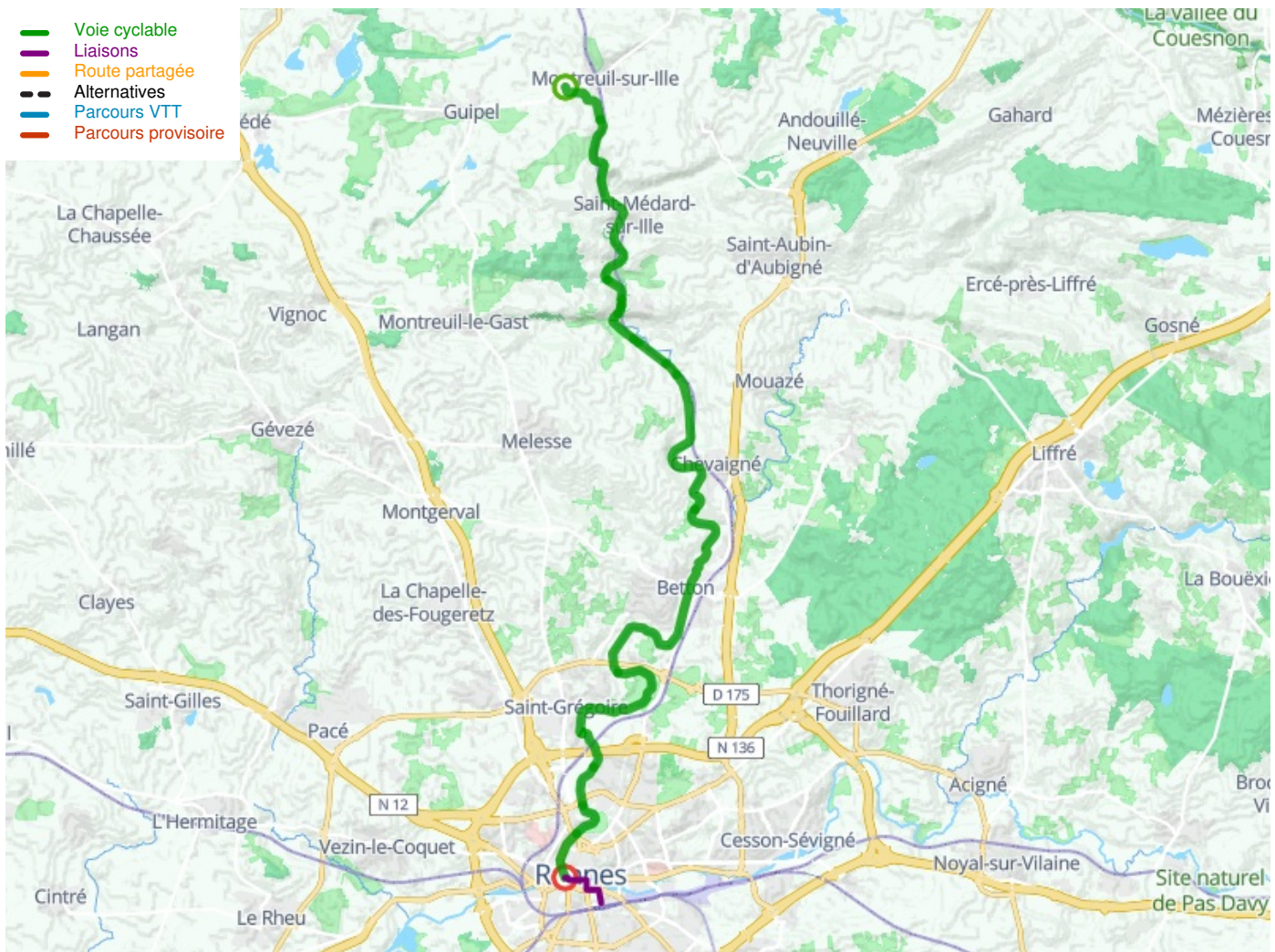
The route

This stage is well signposted all along the way, but make sure you're following the signs marked 'V2'. Virtually the whole stage is along specially dedicated cycle lanes. The surface along the towpath is of compacted sand and fairly easy to cycle along, but look out for furrows caused by rainwater. As you arrive in Rennes, the cycle route becomes much busier.

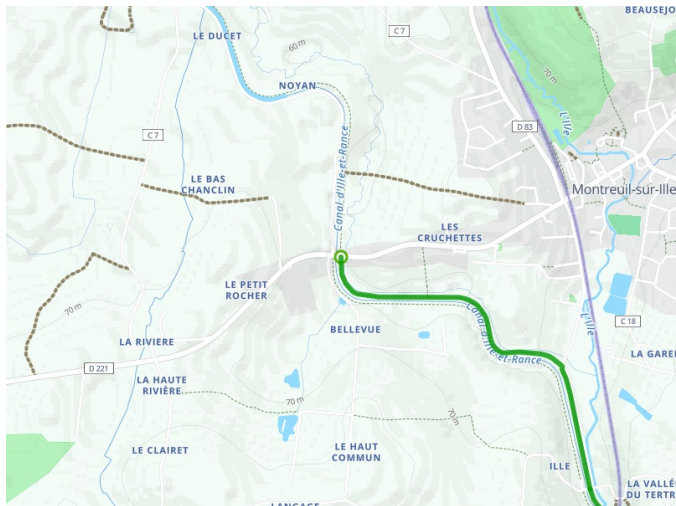
Railway stations - SNCF

Rennes train station (TGV and TER services) : on lines Paris/Rennes/St-Malo and Rennes/St-Malo/Dol de Bretagne/Pontorson/Caen

Regional TER train stations at Montreuil-sur-Ille, St-Médard-sur-Ille, St-Germain-sur-Ille, Chevaigné and Betton.



Départ
Montreuil-sur-Ille



Arrivée
Rennes

