

Voie verte Javron-les-Chapelles / Mayenne

The Greenways of Mayenne



Départ
Pré-en-Pail

Arrivée
Mayenne

Durée
2 h 12 min

Distance
47,65 Km

Niveau
I begin / Family

Thématique
Old railway, Nature & small
heritage

The town of Mayenne, located on the Vélo Francette cycle route, also enables you to reach another cycle route, the Véloscénie, via a greenway heading northeast out of town to Javron-les-Chapelles. This 33km greenway with its good compact surface leads you along a straight trajectory through pretty, hilly countryside.

The route

Leaving Mayenne via the east bank of the River Mayenne, head in the direction of Ambrières-les-Vallées for the junction of greenways, following signs for La Vélo Francette. The two greenways then go their separate ways 200m after the cemetery. Take the right-hand route.

Take care as you cross the D 113 road northeast of Aron.

There are kilometre markers along the greenway.

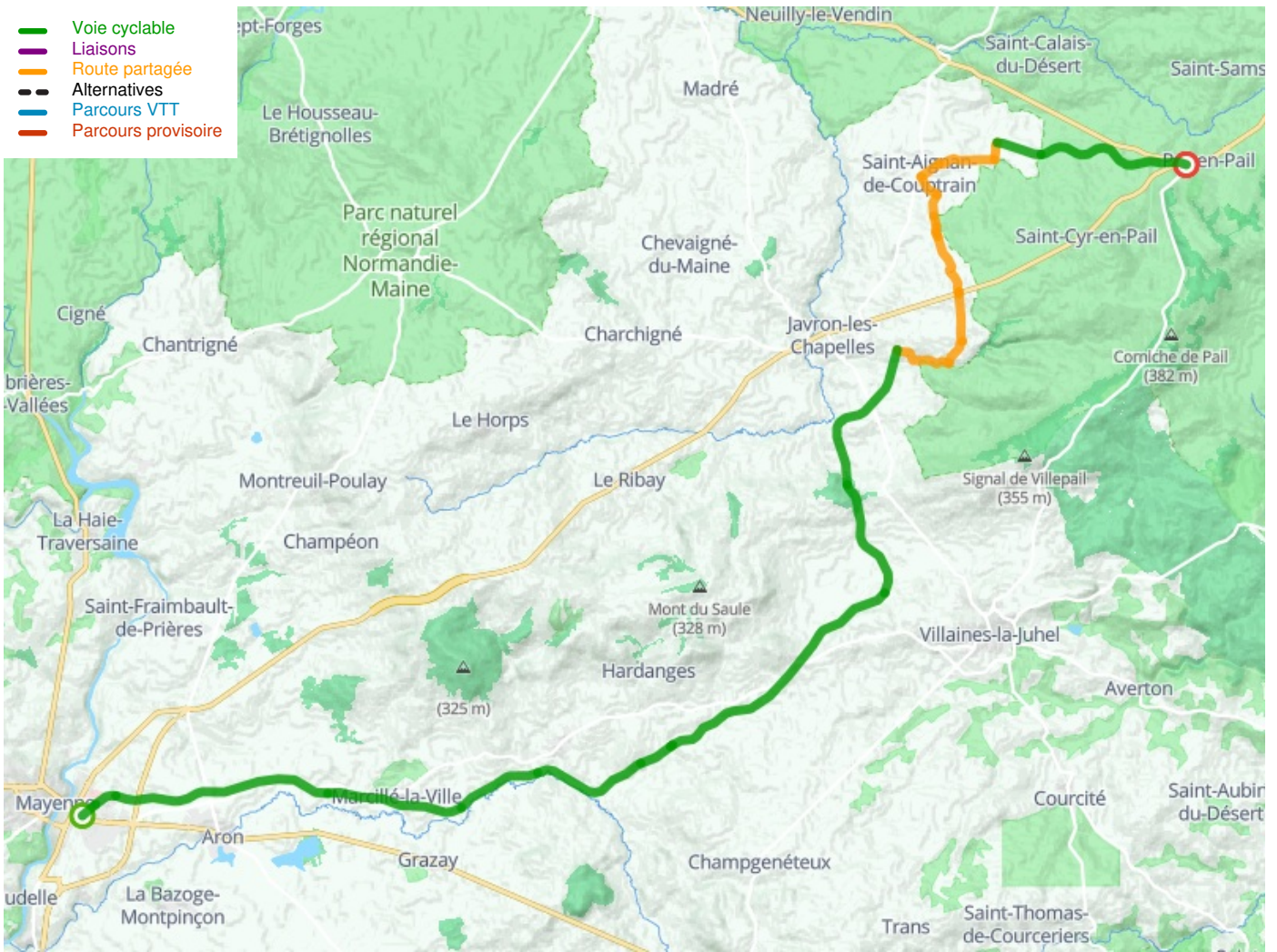
Picnic tables are set out along the route.

Accessing starting points along the greenway

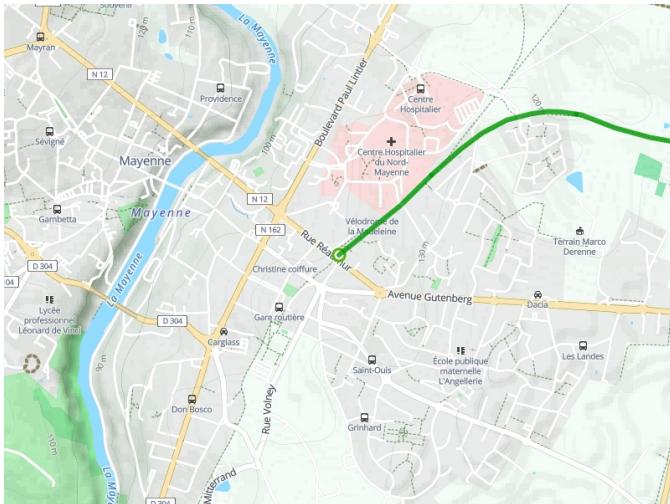
Don't miss

Mayenne-town: [castle museum](#) 02 43 00 17 17; Chapelle des Calvairiennes; [Notre-Dame Basilica](#); [river-boating](#) 02 43 04 19 38 [Mémorial des Déportés de la Mayenne](#) (dedicated to those deported in the Second World War) 02 43 08 87 35

- Voie cyclable
- Liaisons
- Route partagée
- Alternatives
- Parcours VTT
- Parcours provisoire



Départ
Pré-en-Pail



Arrivée
Mayenne

