

Monthermé / Haybes

The Meuse cycle route



Départ
Monthermé

Arrivée
Haybes

Durée
2 h 15 min

Distance
33,93 Km

Niveau
I cycle often

Thématique
Canals & intimate rivers

This stage of La Meuse à Vélo passes through the steepest section of the Ardennes range. Here, the forest-covered slopes sweep down steeply towards the Meuse. Here and there, you'll spot outcrops of schist peeking through: a stone used extensively in local architecture. The landscapes have inspired local myths like Les Dames de Meuse (the Ladies of the Meuse).

The route

Presenting no particular difficulty, the route runs along the perfectly surfaced towpath.

Connections

From Monthermé, you can take another green route running alongside the Semoy. This quiet valley will delight nature lovers.

SNCF (FRENCH RAILWAYS)

- Monthermé railway station
- Revin railway station
- Haybes railway station

Tourist Office(s)

- Les boucles de Meuse & Semoy Tourist Office - www.meuse-semoy-tourisme.com - 03 24 54 46 73
- Val d'Ardenne Tourisme - www.valdardennetourisme.com - 03 24 42 92 42

Don't miss...

Monthermé – numerous viewpoints

Laifour: Les Dames de Meuse (nature site)

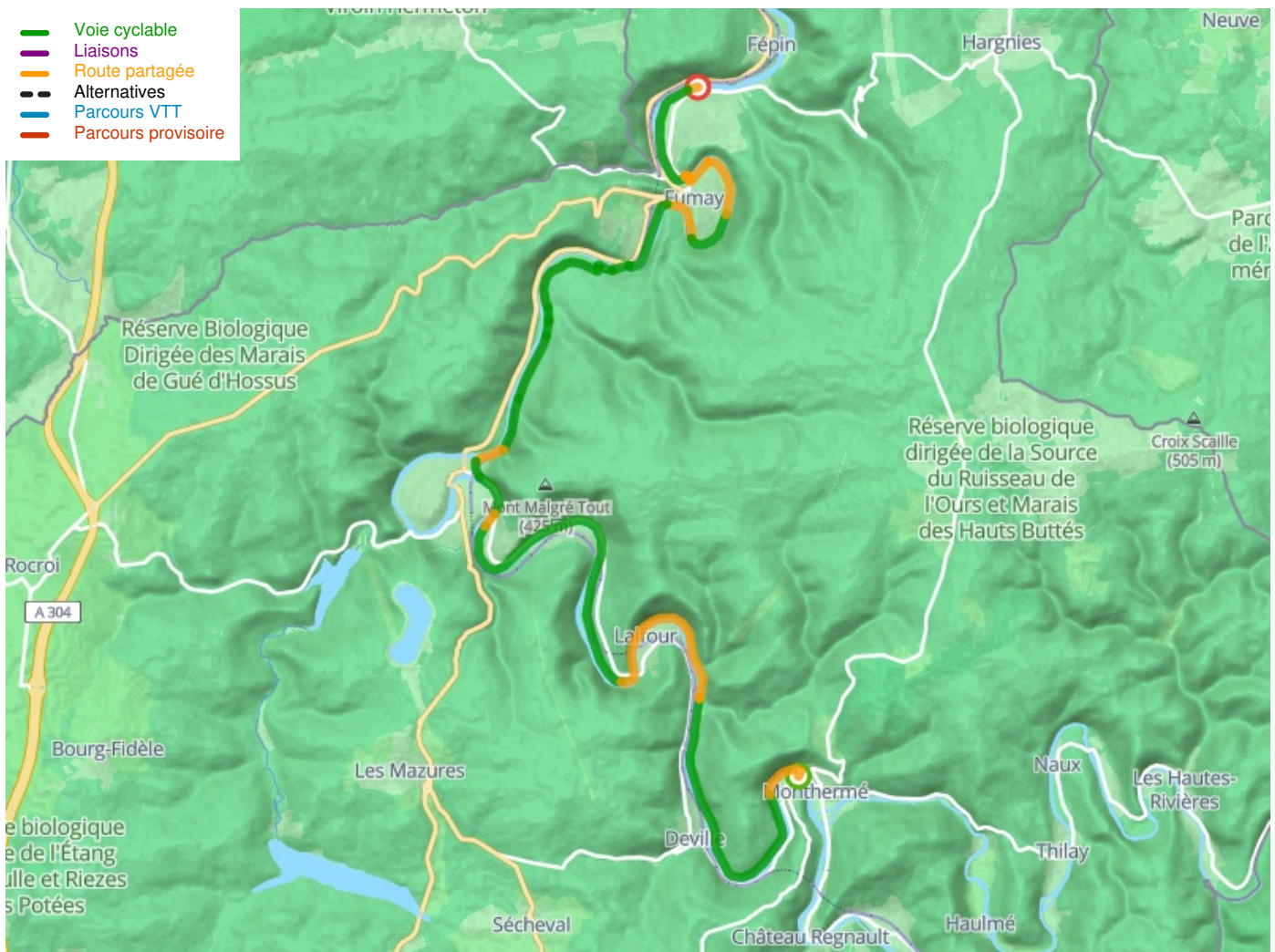
Revin: the Vieux Revin museum

Fumay: France's slate capital

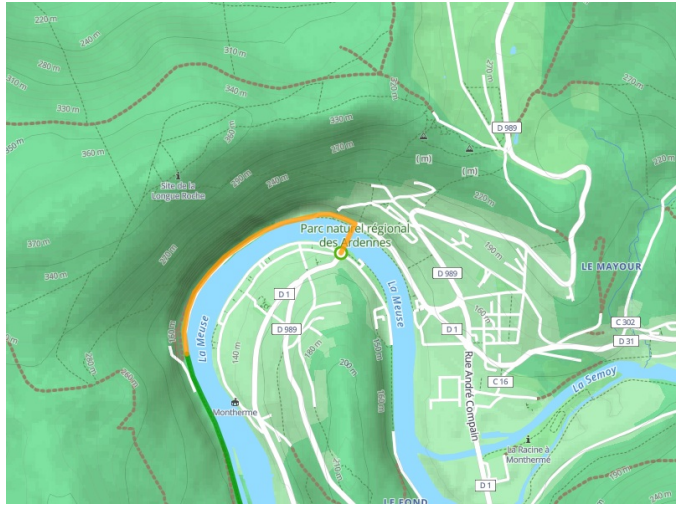
The Terralitude Park - Fumay

Le Clos Belle Rose micro-brewery - Haybes

Haybes: Hiking centre, La Platale viewpoint



Départ
Monthermé



Arrivée
Haybes

