

Chaumergy / Dole

Tour du Jura Vélo - Loisirs



Départ
Chaumergy

Arrivée
Dole

Durée
2 h 17 min

Distance
38,13 Km

Niveau
I begin / Family

Thématique
Canals & intimate rivers

This final stage on the Tour du Jura Vélo Loisirs takes you via Le Finage Plain from the Bresse Jurassienne area to the town of Dole, declared a Ville d'Art et d'Histoire for its cultural riches. Riding along the Voie de la Bresse Jurassienne cycle route, followed by the EuroVelo 6 cycle route, you cross typical Bresse villages displaying traditional architecture. You pass through agricultural lands often lined by streams or lakes much appreciated by anglers. You also pass close to the Maison des Etangs, an educational place where you can learn about the varied flora and fauna of this area, a large part of which is protected as a Natura 2000 zone. Continue on to Chaussin, then cross the Loue River for Tavaux. There, rejoin the iconic EuroVelo 6 cycle route, leading you to the town of Dole riding alongside the Doubs River and its parallel canal.

The Route

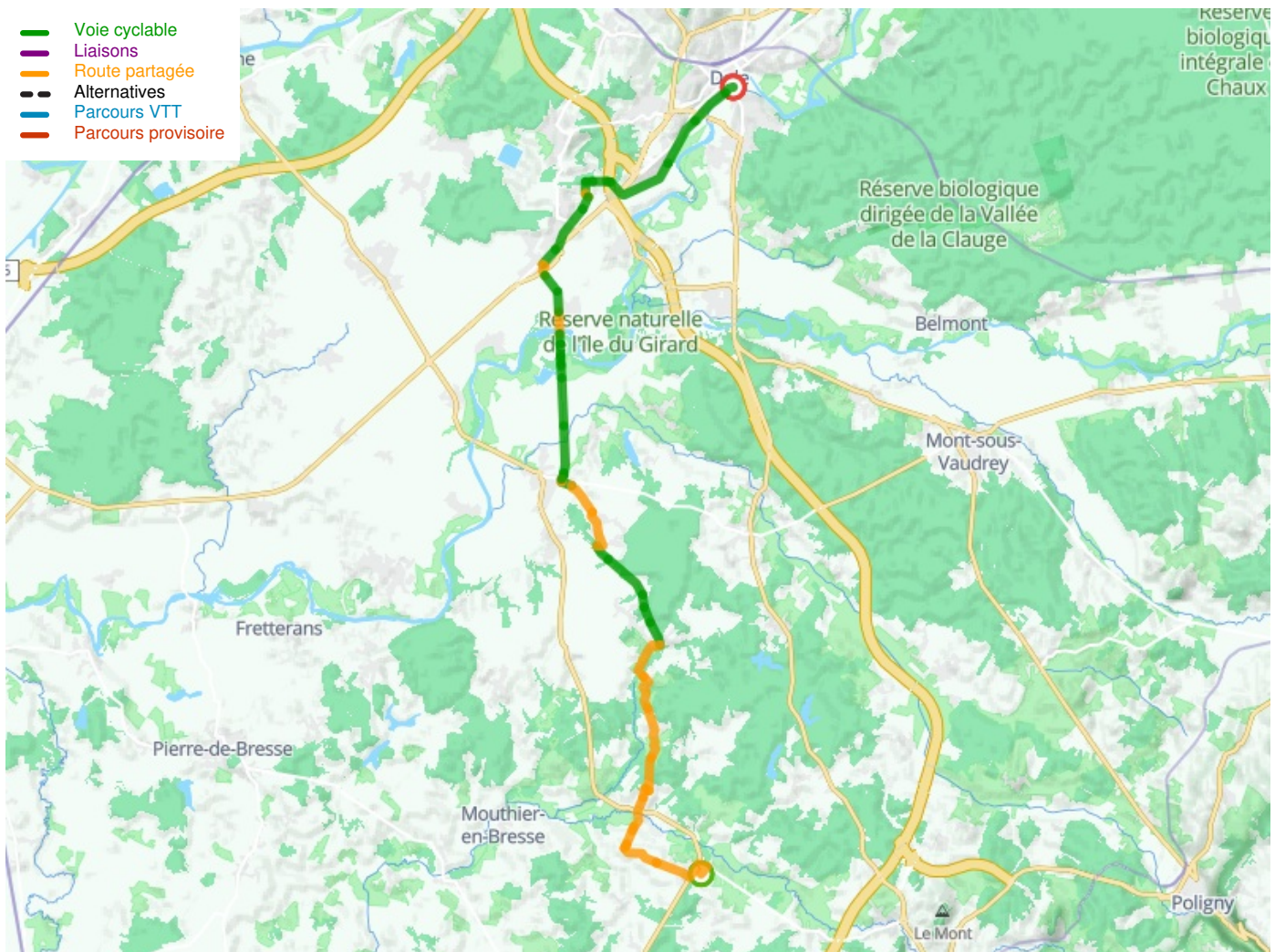
From Chaumergy, continue along the Voie de la Bresse Jurassienne cycle route, taking you along quiet roads shared with motorized traffic up to Pleure. Take care crossing the D468 road at La Chassagne. From Pleure, you reach Gatey via a segregated cycle path. Be careful in Chaussin, especially at the round-about at the entrance to the village. Continue along the cycle route to Molay. Take care in the little town of Tavaux, where you join the EuroVelo 6 cycle route, taking you to the town of Dole via Choisey, following the Canal du Rhône au Rhin.

Practical information

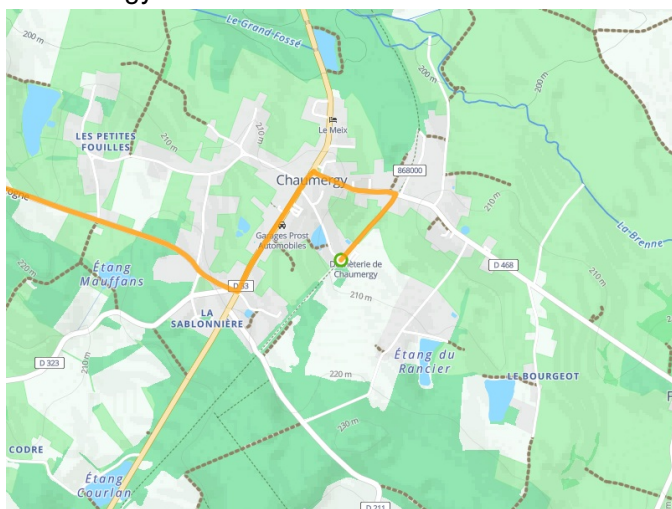
- Wide range of services available at Chaumergy, Chaussin, Tavaux and Choisey
- Train station at Dole
- Accueil Vélo-accredited accommodation at Chaumergy, Chaussin, Parcey, Monnières and Dole

Don't miss

- **Molay:** [la basse vallée du Doubs](#)
- **Chaussin:** [Le Moulin Taron](#) (a functioning windmill)
- **Dole:** [a ville gastronomique](#) (culinary town) and Ville d'Art et d'Histoire for its heritage riches, Maison natale de [Louis Pasteur](#), the great 19th-century scientist's birthplace, in Dole, Hôtel Dieu de Dole, an historic hospital, Canal des Tanneurs de Dole, Collégiale Notre Dame de Dole, a grand church, Musée des Beaux-Arts de Dole, the town's fine arts museum, Doubs River, its canal and locks



**Départ
Chaumeray**



**Arrivée
Dole**

