

Le Veudre / Moulins

Via Allier



Départ
Le Veudre

Arrivée
Moulins

Durée
2 h 27 min

Distance
36,99 Km

Niveau
I cycle often

Thématique
Canals & intimate rivers

Your adventure along the Via Allier cycle route continues along this fine Loire tributary, considered one of the last great wild rivers in Western Europe. To appreciate the Allier to the full and close up, go right to the riverbank to admire the mosaic of rich and varied environments created by its shifting waters that have carved out substantial meanders. You might compare the Allier River to a cyclist, enjoying a certain freedom of movement on their journey... especially, in the Allier's case, south of Moulins! As to this city, historic capital of the Bourbon dukes, it merits an in-depth exploration of its streets and lanes, revealing five centuries of splendid architecture.

The Via Allier cycle route from Veudre to Moulins

After enjoying a look around Le Veudre's shops, continue on the Via Allier cycle route via the RD101 road, taking the direction of Aubigny and Moulins. This road only has light traffic and runs beside the Allier River and its flood meadows. The route then leads you into Bagnolet Forest as far as Bagneux, turning right onto the RD58 road, then following the RD287. From Bagneux to Montilly, you rejoin the RD101 on a section that makes for easy cycling before you shift to small parish roads to carry on to Neuvy, followed by Moulins, the Via Allier leading you to the gates of the Centre National du Costume de Scène (or Theatre Costumes Museum) on the west bank of the Allier.

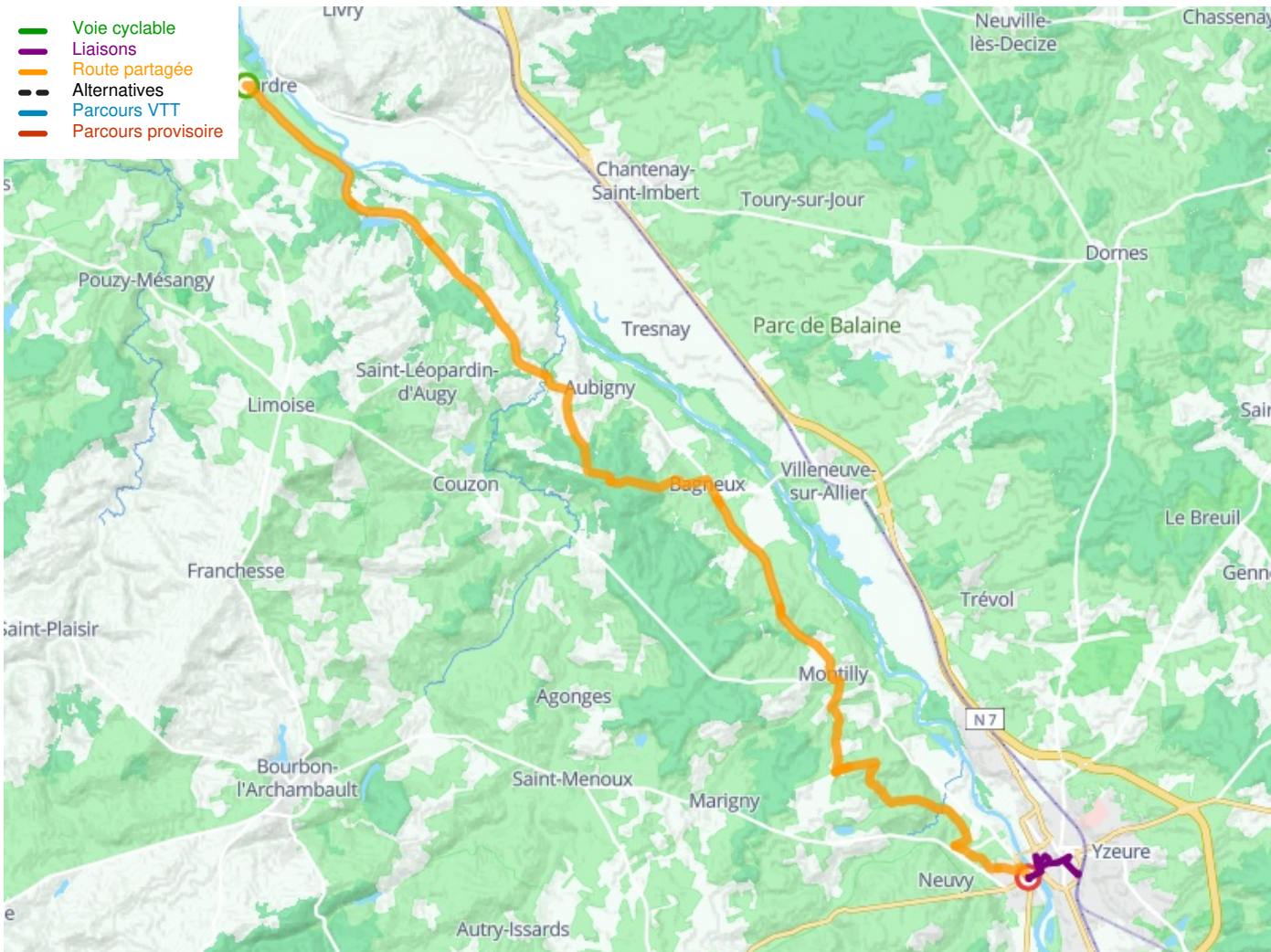
Don't miss

- **Forêt de Bagnolet** : Mainly planted with oak and beech, this 1,900-hectare forest is home to a very diverse array of fauna and flora. Here, hiking trails encourage walkers to go in search of a hermit's legendary tomb or to Aubigny Lake, with its leisure facilities.
- **Centre national du costume de scène à Moulins** : the CNCS, a major theatre costume museum, is home to some 10,000 of the finest costumes made for French operas, ballets and theatre, shown to great effect in set pieces and in a setting that proves utterly unique. Every year, two original, creative exhibitions immerse visitors in the French theatrical world, displaying pieces from the collections of the Comédie Française, the Opéra de Paris and the Bibliothèque Nationale de France.

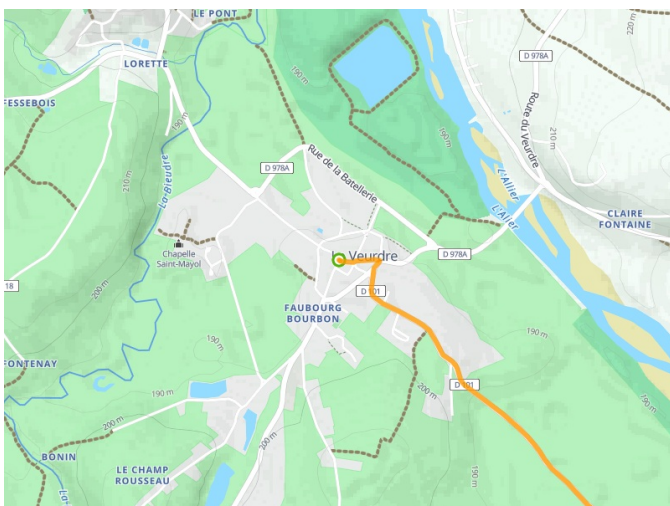
Railway stations

Stations located on the other bank of the Allier : [Ligne TER Moulins <> Nevers](#).

- Saint-Pierre-le-Moûtier
- Chantenay-Saint-Imbert
- Villeneuve-sur-Allier
- Moulins-sur-Allier



Départ
Le Veudre



Arrivée
Moulins

