

Saint-Romain-en-Gal / Vienne / Sablons

ViaRhôna



Départ
Saint-Romain-en-Gal

Arrivée
Sablons

Durée
2 h 11 min

Distance
32,80 Km

Niveau
I begin / Family

Thématique
Canals & intimate rivers

This remarkable ViaRhôna stage offers a great variety of landscapes. From Vienne, once an ancient capital of Roman Gaul, to the nature reserve of L'île au Beurre, bearing witness to the Rhône's wild side, via steeply terraced vineyards, including the prestigious Côte-Rôtie, and the first major orchards along the Rhône Valley, this stage will delight those interested in history, nature and gastronomy. You follow greenways for almost the entire length, joining a road to enter Sablons.

The route

The stage is almost entirely on greenways that are well signposted and laid out up to Sablons. There are just a few small stretches on roads, particularly arriving at Sablons. Take care on the D 4 road at Sablons.

Railway stations (SNCF) :

Vienne railway station - Saint Clair-les-Roches railway station - Péage de Roussillon railway station :

- TER (local service) line 5 : Lyon > Valence > Avignon > Marseille

Sablons bus station bus :

Local bus services (**bikes are not accepted**) : line 75 : Lyon > Vienne > Le Péage de Roussillon > Sablons > Serrières > Félines > Peaugres > Davézieux > Annonay

>> [Check TER timetables in Rhône-Alpes](#)

Tourist Information Centres :

- [Vienne and Pays Viennois Tourist Office](#) Ph. 04 74 53 80 30
- **Condrieu region Tourist Office, branch of the tourist office of Pilat** Ph. 04 74 56 62 83
- [Pilat Rhodanien Tourist Office, Maison du Parc Naturel Régional \(Pélussin\)](#) Ph. 04 74 87 52 00
- [Roussillon County Tourist Office](#) Ph. 04 74 86 72 07

Don't miss :

Vienne: a Ville d'Art et d'Histoire, in recognition of its cultural riches. The town boasts one of the richest Roman legacies in France, with an ancient theatre, the Cybèle archaeological garden, the temple to Augustus and Livia, plus an enigmatic pyramid. Vienne is also known for its International Jazz Festival, held each July.

Saint-Romain-en-Gal: [for its archaeological site and its Gallo-Roman museum.](#)

L'île Barlet: located on a secondary branch of the Rhône at St-Romain-en-Gal, with outdoor café, or guinguette, cycle hire and a fitness trail.

Ampuis: here, the vines of Côte-Rôtie have been famed since antiquity.

Centre d'observation de l'île du Beurre – at Tupins-et-Semons: this is a protected site, an island whose changing landscapes bear witness to the Rhône's wild side. Along the nature trail are two observatories, open every day of the year. There's also a permanent exhibition on beavers and aquariums presenting the fish to be found in the Rhône and its secondary branches.

The outdoor sports and recreation centre at Les Roches de Condrieu

The outdoor sports and recreation centre at Saint-Pierre-de-Bœuf

Sablons: l'île de la Platière, an island on the Rhône.

Serrières: Musée des marinières, a museum dedicated to the Rhône's former mariners.

Excursion to the Parc Naturel Régional du Pilat: above the famous wine village of Condrieu, the steep slopes are covered with vines, and majestic views open onto the Rhône Valley. Then comes wilder countryside scattered with historic villages like Malleval, a medieval fortified village in a remarkable site.

Markets:

Vienne : Saturday morning

Loire sur Rhône : Tuesday morning

Ampuis : Wednesday morning

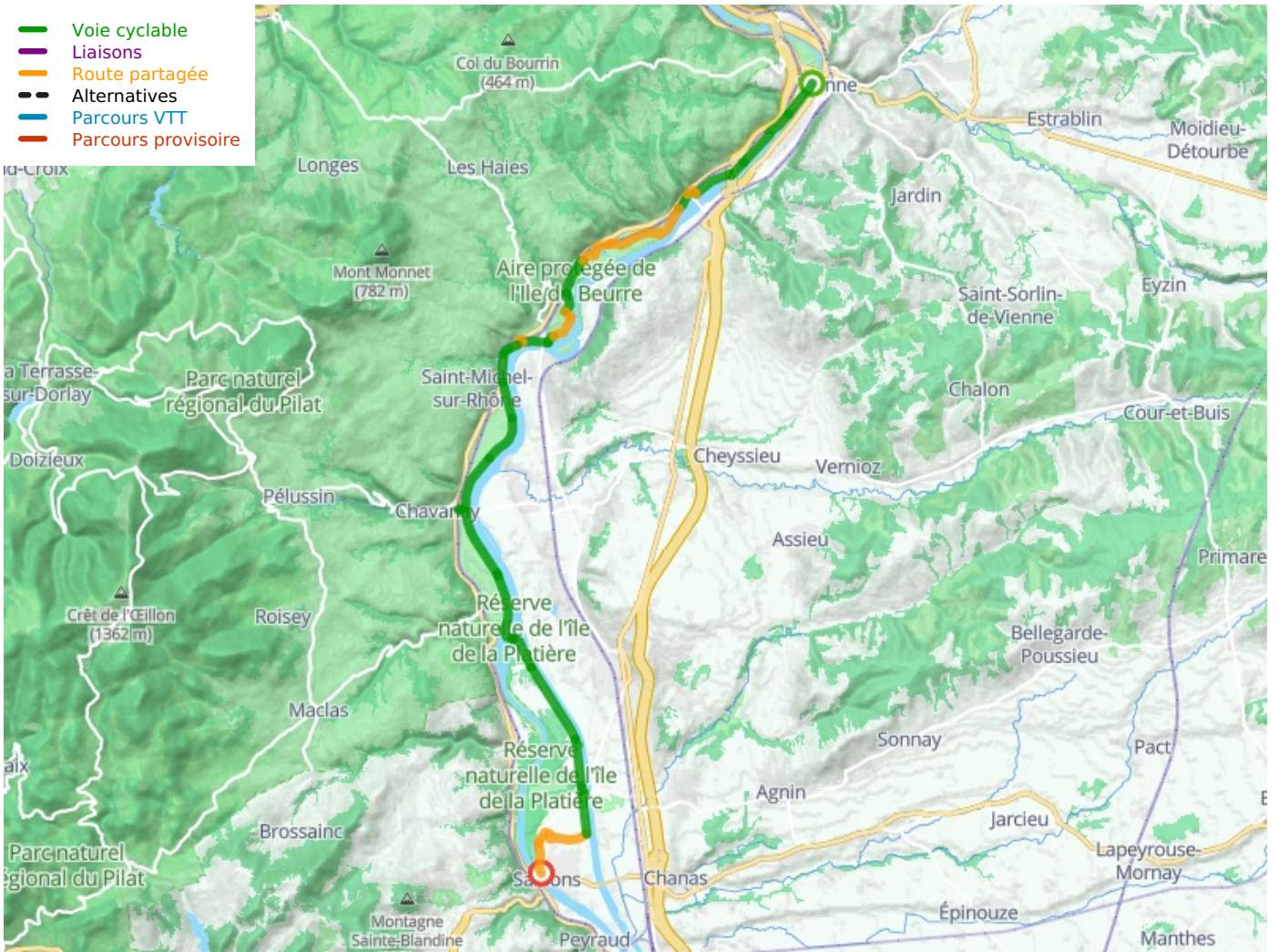
Condrieu : Friday morning

Les Roches de Condrieu : Tuesday morning

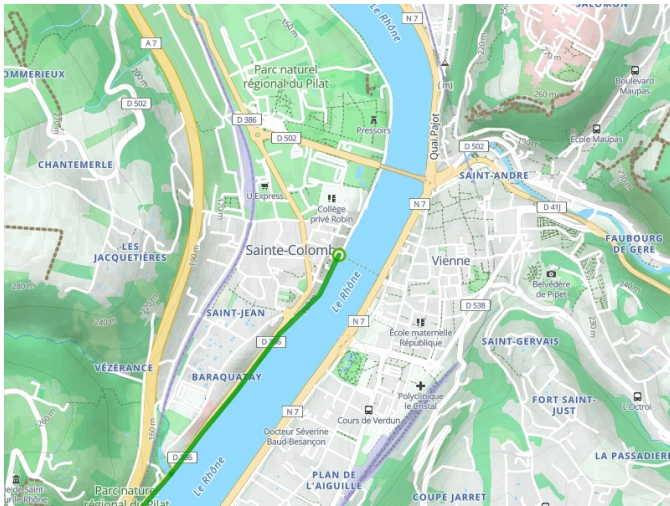
Le Péage de Roussillon : Thursday and Saturday morning

Sablons : Tuesday morning

- Voie cyclable
- Liaisons
- Route partagée
- - - Alternatives
- Parcours VTT
- Parcours provisoire



Départ
Saint-Romain-en-Gal



Arrivée
Sablons

